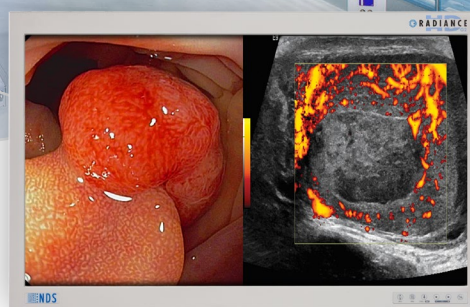


32" RADIANCE® G2

The **First** 32" Surgical Display with LED Backlight



The new 32" Radiance® G2 is the industry's first 32" surgical display to feature LED backlight technology. As part of the Radiance® G2 family of surgical displays, it incorporates proprietary color calibration technology to ensure consistent and accurate color reproduction year after year. It is factory calibrated in accordance with the BT.709 HDTV color standard. This makes the 32" Radiance® G2 display ideal for applications such as flexible endoscopy, where color representation plays a critical role in the identification of unhealthy tissue. Featuring two 3G-SDI inputs and an optional single-fiber input, this display could be considered a "future-proof" investment that minimizes exposure to technology obsolescence.

- The **First** 32" Surgical Display with LED Backlight
- Boom Mountable, Lightweight Design (25 lbs.)
- Proprietary Color and Gamma Calibration Ensure Consistent and Accurate Color Response
- Compatible with All Popular Endoscopy Systems and Many Other Modalities
- True 3000:1 Native Contrast Ratio (Not Dynamic)

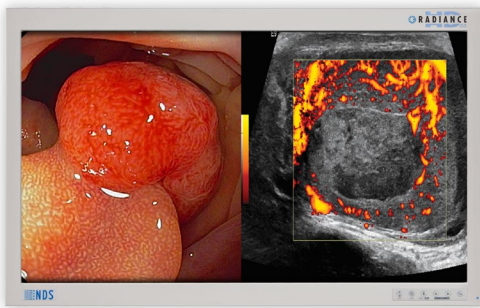
First in Imaging

32" RADIANCE® G2

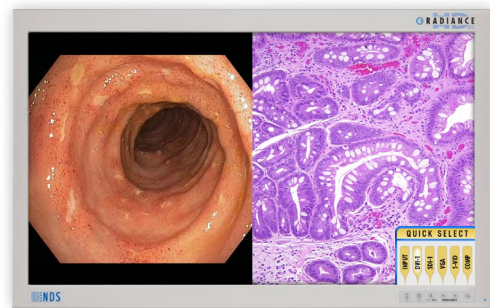
The **First** 32" Surgical Display with LED Backlight



Endoscopy & Ultrasound

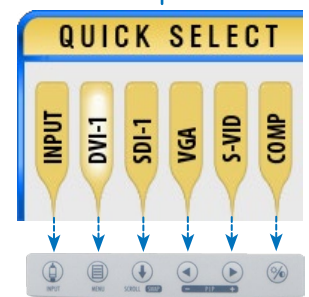


Endoscopy & Pathology Imaging



PRODUCT FEATURES

| | |
|-----------------------------|---|
| LCD Panel | Active Matrix TFT with LED Backlight |
| Luminance | 350 cd/m ² (Typical), 300 cd/m ² (BT.709) |
| Native Contrast Ratio | 3000:1 (Not Dynamic) |
| Gamma & Color Calibration | NDSsi's Proprietary Color Correction Technology (CCT) |
| Display Weight | 25 lbs. (11.4 kg) |
| Resolution (H x W) | 1920 x 1080 (Full HD) |
| Single-Fiber Input (LC x 1) | Optional Feature |
| 3G-SDI Capability | Comes Standard with Two 3G-SDI Inputs |
| Gamma Settings | 1.8, 2.0, 2.2, 2.4, 2.6, Video, and PACS |
| "Quick Select" Feature | New User Interface for Quickly Switching Inputs |



New "Quick Select" Softkeys

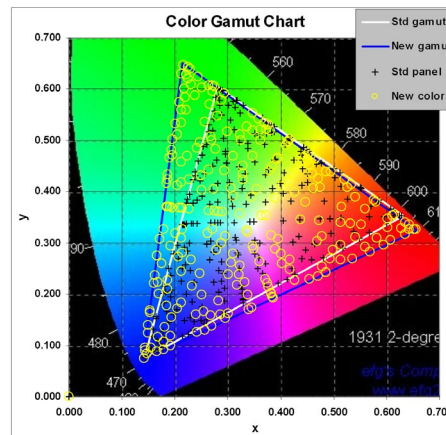
COMPLIANCE & CERTIFICATIONS

ANSI/AAMI ES60601-1, CAN/CSA C22.2 No. 60601-1, FCC Class B, EN60601-1, EN60601-1-2, CE, MDD 93/42/EEC, 2007/47/EC, RoHS, WEEE, Class I Medical Device, CCC (Pending).

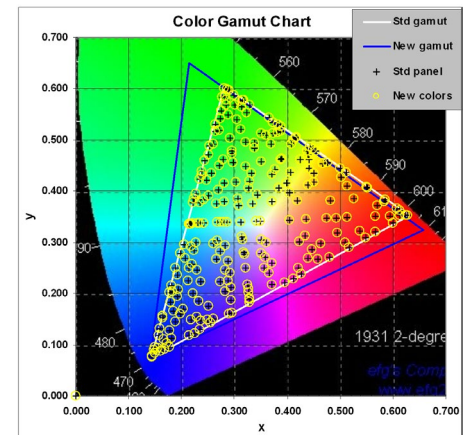
COLOR CORRECTION TECHNOLOGY (CCT)

NDSsi's Color Correction Technology (CCT) is a proprietary dynamic color calibration solution. Pixel-by-pixel color response correction is performed in real-time, providing consistent color response in accordance with the BT.709 HDTV color standard. The clinical benefit of this is consistent color reproduction year after year across all Radiance G2 displays, regardless of which operating room they are installed in, or which cart they are on.

Without Color Correction Technology



With NDSsi Color Correction Technology



Corporate Headquarters

5750 Hellyer Avenue
San Jose, CA 95138 (USA)
Tel: 408 776 0085
Toll Free: 866 637 5237
Email: info@ndssi.com

Europe

Nijverheidscentrum 28
2761 JP Zevenhuizen (ZH)
The Netherlands
Tel: +31 180 63 43 56
Email: info-EMEA@ndssi.com

Asia Pacific

1F KDX Shiba-Daimon Bldg.,
2-10-12 Shiba-Daimon, Minato-ku,
Tokyo 105-0012, Japan
Tel: +81 3 6402 9892
Email: info@ndssi.jp