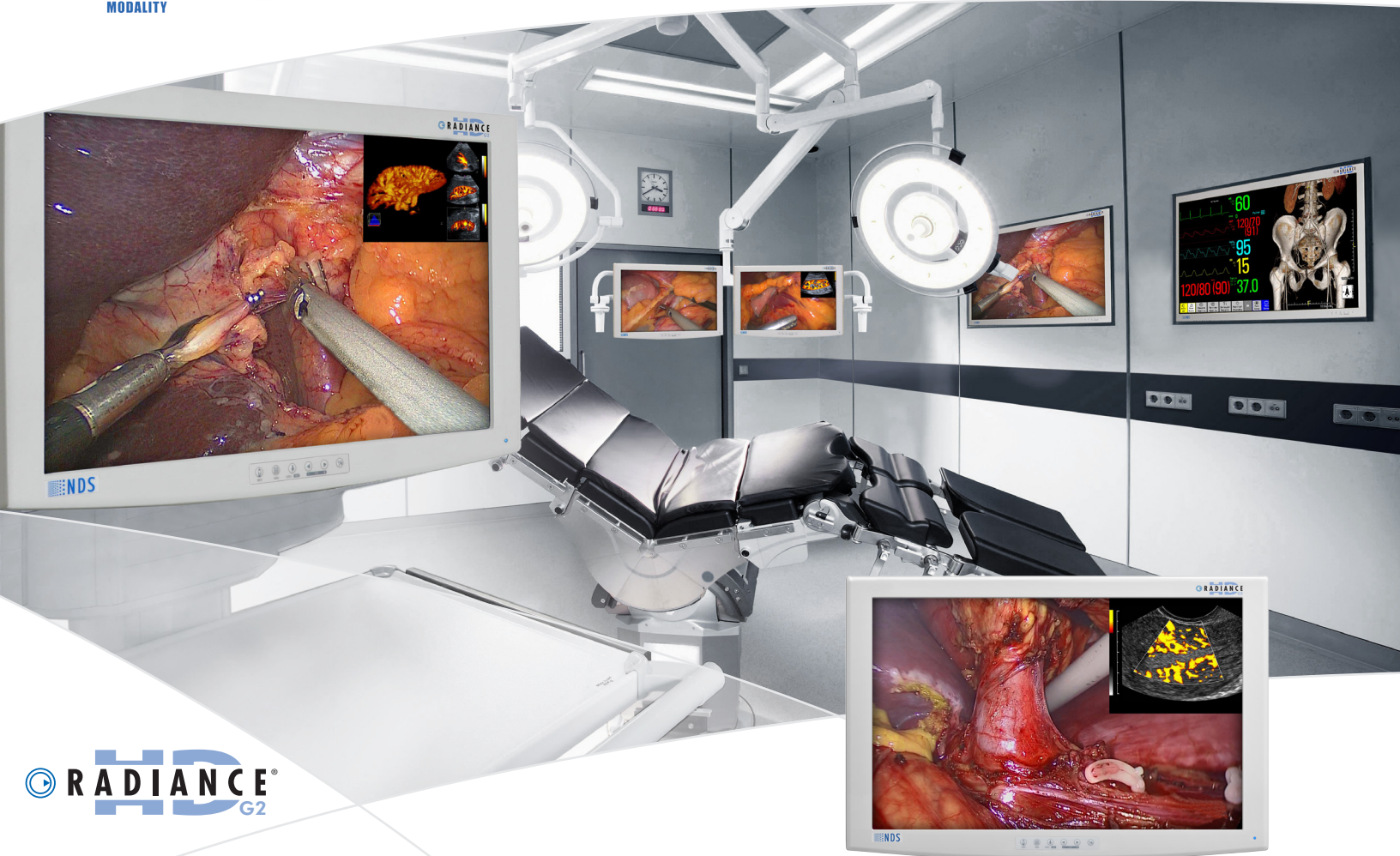


# 24" RADIANCE® G2

## Industry-Leading High-End Surgical Display



The NDSsi 24" Radiance® G2 display is the first full-featured 24" surgical display to utilize the latest LED backlight technology. It also features NDSsi's proprietary Color Correction Technology (CCT), which enables the display to conform to the BT.709 HDTV color standard. The precise color calibration achieved using CCT ensures consistent color response across the entire family of Radiance® G2 displays. Surgeons can now have the clinical confidence that the endoscopic image they view in different rooms and on different size displays are exactly the same. The 24" Radiance® G2 is equipped with two 3G-SDI inputs and an optional single-fiber input. Plus it is compliant with both the 3rd Edition medical safety standard and RoHS requirements, making it a future-proof investment.

- The Latest High-End 24" Surgical Display
- Industry Leading LED Backlight Technology
- Color Correction Technology (CCT)
- Supports 3G-SDI and Optional Single-Fiber Inputs
- 3rd Edition & RoHS Compliance

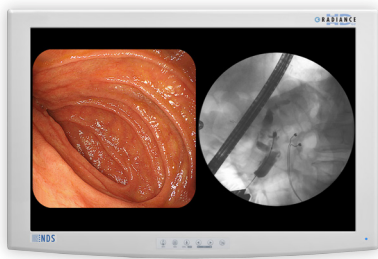
***First*** in Imaging

# 24" RADIANCE® G2

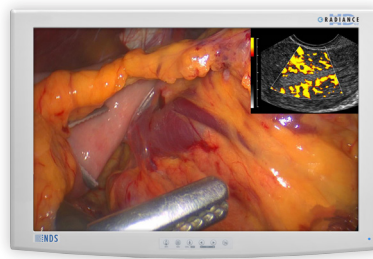
## Industry-Leading High-End Surgical Display



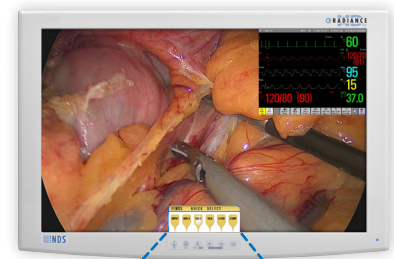
### Endoscopy & Fluoroscopy



### Endoscopy & Ultrasound

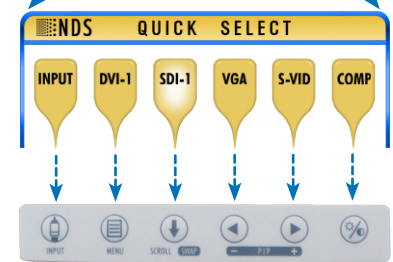


### Endoscopy & Vital Signs



### PERFORMANCE / FEATURES

LCD Panel	Active Matrix TFT with In-Plane-Switching, LED Backlight
Output Luminance (Max)	300 cd/m <sup>2</sup>
Output Luminance (Calibrated)	250 cd/m <sup>2</sup> (BT.709)
Resolution (H x V)	1920 x 1200 (WUXGA)
Single-Fiber Input (LC x 1)	Optional Feature
3G-SDI Capability	Comes Standard with Two 3G-SDI Inputs
Full Multi-Modality Support	Yes
Gamma	1.8, 2.0, 2.2, 2.4, 2.6, Color-Corrected Video Gamma, and PACS
"Quick Select" Feature	New Interface for Quickly Switching Inputs



New "Quick Select" Softkeys

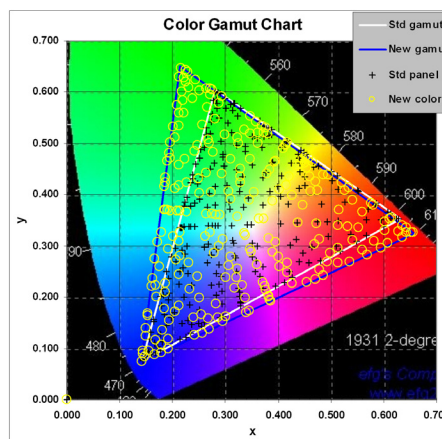
### REGULATORY COMPLIANCE

UL60601-1, ANSI/AAMI ES60601-1, CAN/CSA C22.2 No. 60601-1, FCC Part 15, EN60601-1, EN60601-1-2, CE, MDD 93/42/EEC, 2007/47/EC, RoHS, WEEE, Class I Medical Device, CCC (Pending), IP 32

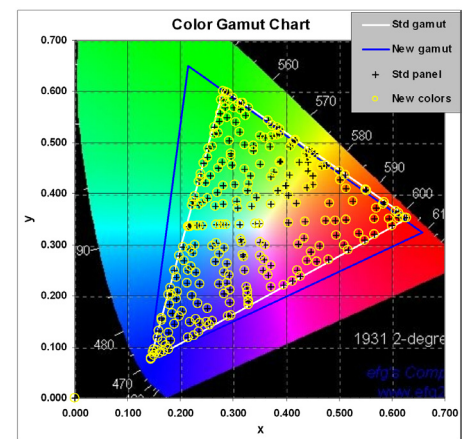
### COLOR CORRECTION TECHNOLOGY (CCT)

NDSsi's Color Correction Technology (CCT) is a proprietary dynamic color calibration solution. Pixel-by-pixel color response correction is performed in real-time, resulting in a display that conforms to the BT.709 HDTV color standard. The clinical benefit for surgeons is superior color consistency across all displays, no matter which operating room they are installed in, or which cart they are on.

### Without Color Correction Technology



### With NDSsi Color Correction Technology



### Corporate Headquarters

5750 Hellyer Avenue  
San Jose, CA 95138 (USA)  
Tel: 408 776 0085  
Toll Free: 866 637 5237  
Email: info@ndssi.com

### Europe

Nijverheidscentrum 28  
2761 JP Zevenhuizen (ZH)  
The Netherlands   
Tel: + 31 180 63 43 56  
Email: info-EMEA@ndssi.com

### Asia Pacific

Sea Fort Square/Center Building, 8F  
2-3-12 Higashi-Shinagawa,  
Shinagawa-ku Tokyo, Japan 140-0002  
Tel: + 81 3 5781 8292  
Email: info@ndssi.jp