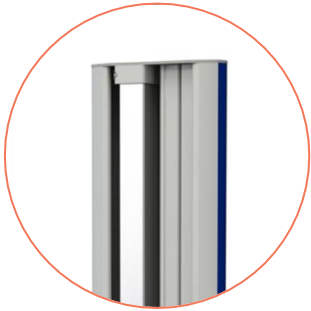


Flexx two

Medical equipment cart



100mm double
wheel casters



Cable channel &
Stainless steel
mounting pole



Jansen
medicars

Flexx two medical equipment cart

The Flexx two is an very compact medical equipment cart. It is designed to optimally position medical devices in operating theaters and treatment rooms. Due to the modular concept this cart can be assembled according to customers requirements.



Key features

The Flexx two is available in two heights and two shelf widths, resulting in four different models:

- Flexx two 43-100, height = 100cm, shelf width = 43cm
- Flexx two 43-150, height = 150cm, shelf width = 43cm
- Flexx two 54-100, height = 100cm, shelf width = 54cm
- Flexx two 54-150, height = 150cm, shelf width = 54cm

The basic cart is standard equipped with:

- Solid chassis with heavy-duty \varnothing 100mm dual wheel swivel castors, the front two are equipped with a total stop (double brake: rolling and swiveling blocked). These castors run very smoothly and make the cart very easy to steer, which comes in handy when maneuvering in tight spaces such as the operating theatre. Also, these castors are highly resistant to corrosion
- Lateral side skirts, fitted with mounting rails (front and rear) and cable management system;
- Top shelf.

Modular concept

The Flexx line carts are all based on a standardized modular concept, allowing to assemble each cart configuration according to customer requirements. The basic cart contains a solid undercarriage with 100mm double wheel castors, of which the front two are equipped with a double brake. The vertical column of the cart contains a cable channel and a stainless steel section for mounting the accessories.

Available accessories are:

- Shelves & Drawers
- Holders & brackets, such as IV poles, scope & camera holders
- Gas cylinder holders
- Monitor mounts
- Power strip, mains cable,
- Isolations transformers

Please feel free to discuss specific features if above-mentioned accessories do not meet your requirements. We can design and produce tailor made products that will meet your expectations.

Characteristics

- Standards & classification NEN/EN/IEC60601-1
Class 1
- Color (powder coating) RAL9002 (medical white)
- Accent color RAL7022 (gray)

Flexx two 43-100

- Dimensions (wxdxh) 572x600x1052 mm
- Weight 24,7 kg

Flexx two 43-150

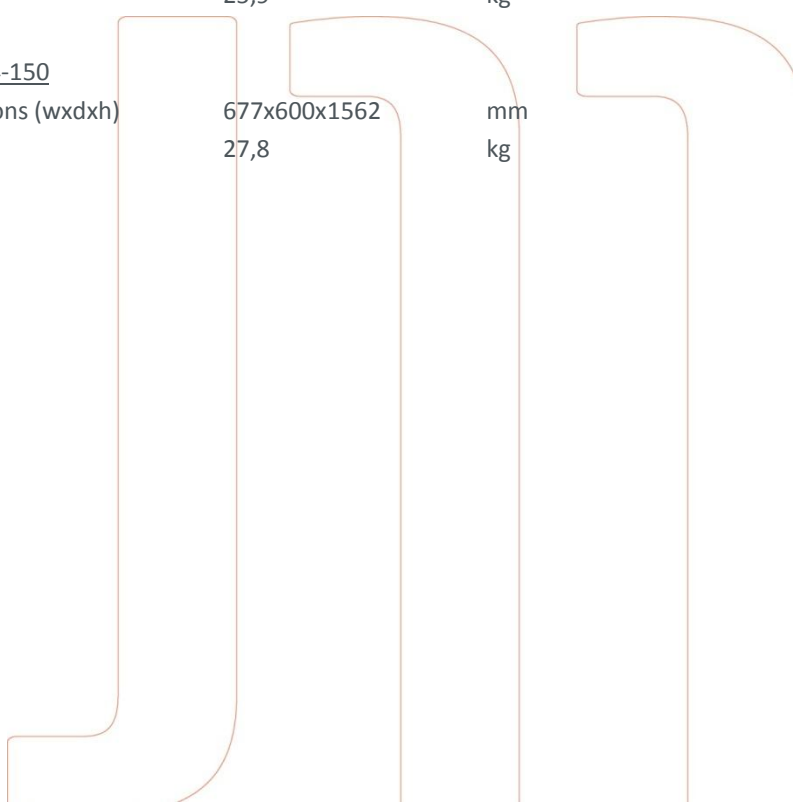
- Dimensions (wxdxh) 572x600x1562 mm
- Weight 26,6 kg

Flexx two 54-100

- Dimensions (wxdxh) 677x600x1052 mm
- Weight 25,9 kg

Flexx two 54-150

- Dimensions (wxdxh) 677x600x1562 mm
- Weight 27,8 kg



Pacemaker programmer cart



ICU transport cart for ventilated patients



Endoscopy cart

