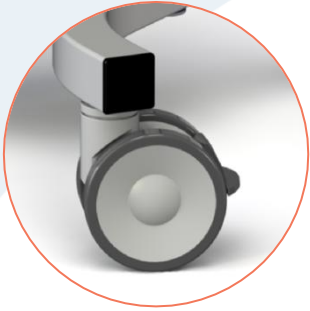
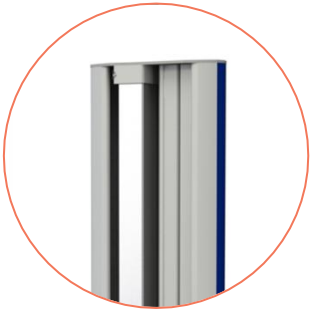


Crozz one 2G

Medical equipment cart



125mm double
wheel casters



Cable channel &
Stainless steel
mounting pole



Jansen
medicars

Crozz one 2G medical equipment cart

The Crozz one medical equipment cart is the first model in the Crozz cart line and is designed for a compact installation of medical equipment. This model can be used for a variety of applications, ranging from monitor stands to more complex applications, such as the setup of equipment for endoscopic surgery.

Modular concept

The Crozz line carts are all based on a standardized modular concept, allowing to assemble each cart configuration according to customer requirements. The Crozz one cart is available in two different heights: 100cm and 150cm

The basic cart contains a solid undercarriage with 125mm double wheel castors, of which the front two are equipped with a double break. The vertical post of the cart contains a cable channel and a stainless steel section for mounting the accessories.

Available accessories are:

- Shelves & Drawers
- Holders & brackets, such as IV poles, scope & camera holders
- Gas cylinder holders
- Monitor mounts
- Power strip, mains cable,
- Isolations transformers & Battery Power System

Please feel free to discuss specific features if above-mentioned accessories do not meet your requirements. We can design and produce tailor made products that will meet your expectations.

Characteristics

Crozz one 2G 100

- Dimensions (wxdxh) 620x710x1008 mm
- Weight 19,5 kg
- Standards & classification NEN/EN/IEC60601-1 Class 1

Crozz one 2G 150

- Dimensions (wxdxh) 620x710x1518 mm
- Weight 22,5 kg
- Standards & classification NEN/EN/IEC60601-1 Class 1

ENT endoscopy cart for polyclinic



ECG cart



Battery powered monitor stand

