



Operating Room Solutions

CuratOR[®] PRODUCTS

EN



EXPERIENCE THE FUTURE OF
OPERATING ROOM TECHNOLOGY

Making Each Life Visual

Every life is unique. Every person's medical treatment should be tailored to meet their individual needs.

In the age of precision medicine, the possibilities offered by biotechnologies, artificial intelligence, and information technology open up completely new avenues for diagnosis, prevention, and treatment.

Precision requires comprehensive information. Collecting, linking, and analyzing data, as well as recording, storing, and evaluating image data therefore represents a critical resource for modern medical practices.

Faster treatment success, better quality of life: Technical innovation has an immediate impact on the medical processes in hospitals and operating rooms. Which is why we employ all of our experience and work together with highly qualified medical teams to produce reliable systems for processing image data in the age of precision medicine.

Our knowledge is in the service of better health.
Every life is worth it.

Making Each Life Visual.

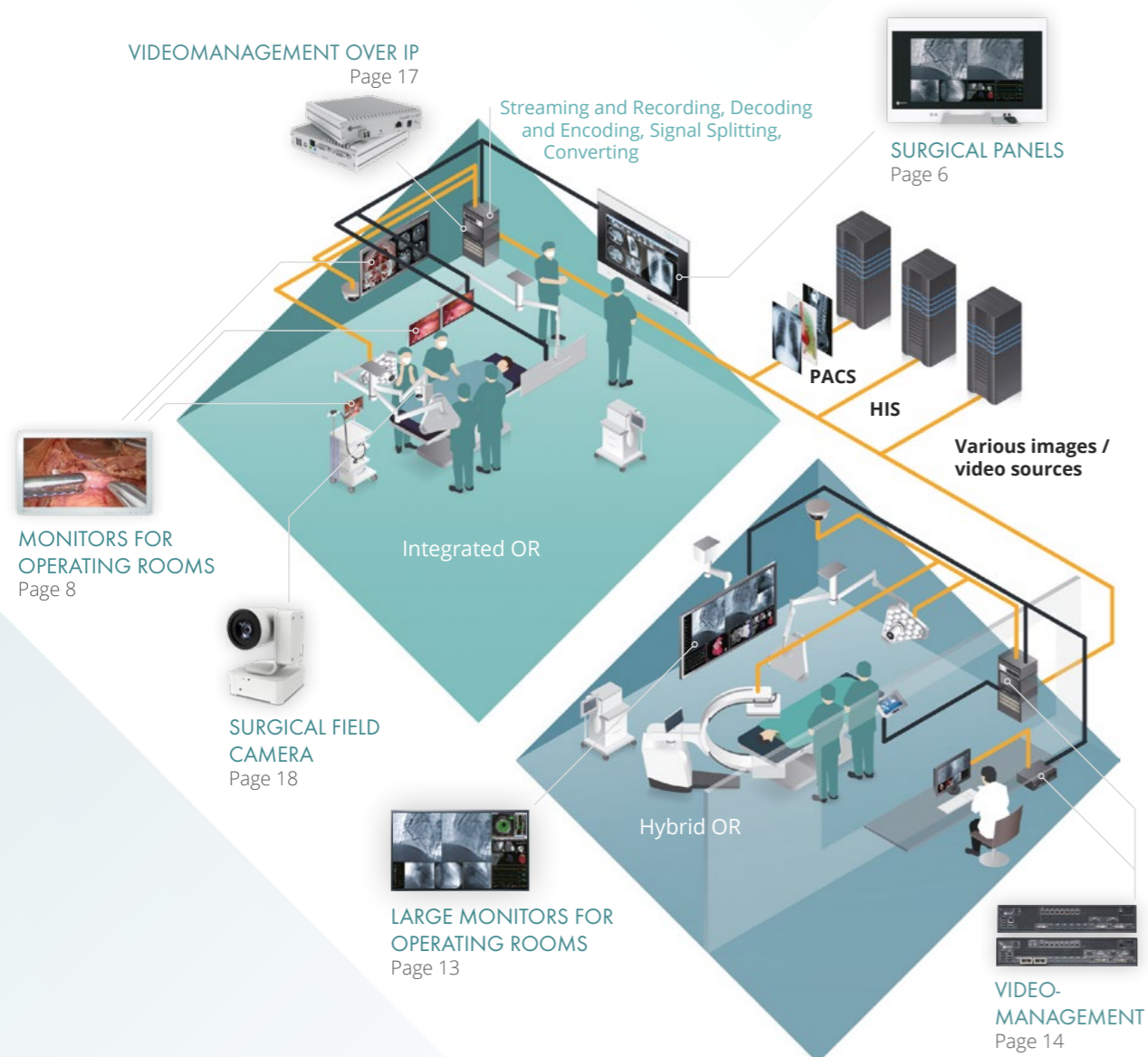


FLEXIBLE. INTELLIGENT. EXPANDABLE.

OR SYSTEM SOLUTIONS FOR THE OPERATING ROOM

High-performance technology for image reproduction and video management in the OR meets expertise and experience. Designed for scalability and extensibility, EIZO develops visual solutions specifically for the requirements and workflow in the OR. EIZO CuratOR addresses the needs of surgeons, surgical teams and hospital technology. Specializing in the challenges of medical practice in the 21st century.

- Precise image representation for demanding requirements
- Modular system components for customized solutions
- Seamless integration in hospital IT and documentation systems
- Providing information and image data where needed



A MODULAR SYSTEM FOR EVERY APPLICATION SCENARIO

From a simple workstation to a complex multiroom installation: with its modular design, EIZO CuratOR supports a wide variety of requirements and is almost infinitely expandable.

The OR Workstation

Central unit for all image and video signals: the Surgical Panel with built-in EIZO monitor and powerful PC. Whether simple image display or central working and operating station – thanks to different expansion options, the Surgical Panel is the flexible basis of an EIZO CuratOR solution.

Effective Video Management

Image viewing at the press of a button: EIZO's video management solutions support the workflow in the OR. Adapted to the needs of OR staff, CuratOR video management allows you to manage every situation in the OR.

Interfaces to OR documentation and HIS / PACS

HIS and PACS systems can be controlled via existing interfaces. Effortless integration into hospital IT, for example, reduces the amount of documentation required and supports education, validation and process analysis. Flexible, intuitive, personalized.

Video Management over IP

With CuratOR Alipe, EIZO provides a powerful way for network-based transmission of video, audio, and control data. Uncompressed and in real time.

Multiroom Solutions

Whether for documentation or teaching purposes – EIZO CuratOR can be expanded as required and enables the networking and communication of different rooms, even over long distances.

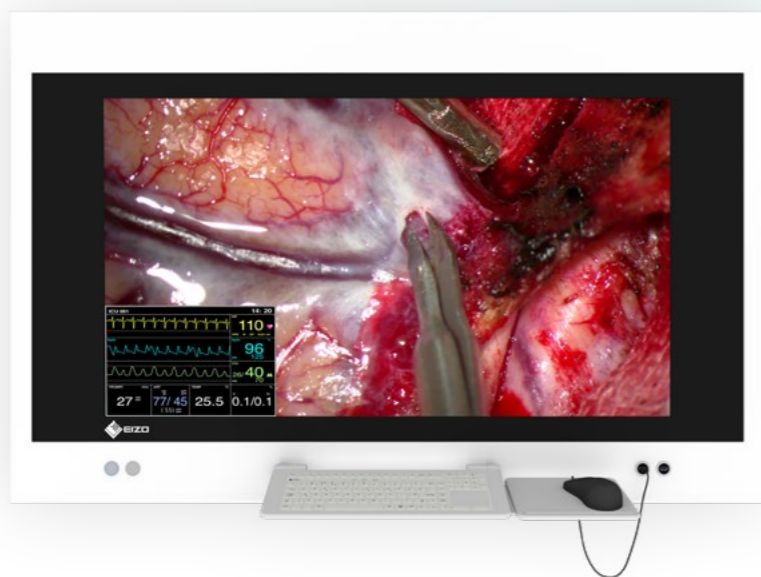


SURGICAL PANELS

CENTRAL UNIT IN THE OPERATING ROOM

Viewing Station

Modern operating rooms are no longer conceivable without digital image viewing systems. Surgical Panels with integrated large screens provide the surgical team with excellent images even when viewed from a distance across the operating room.



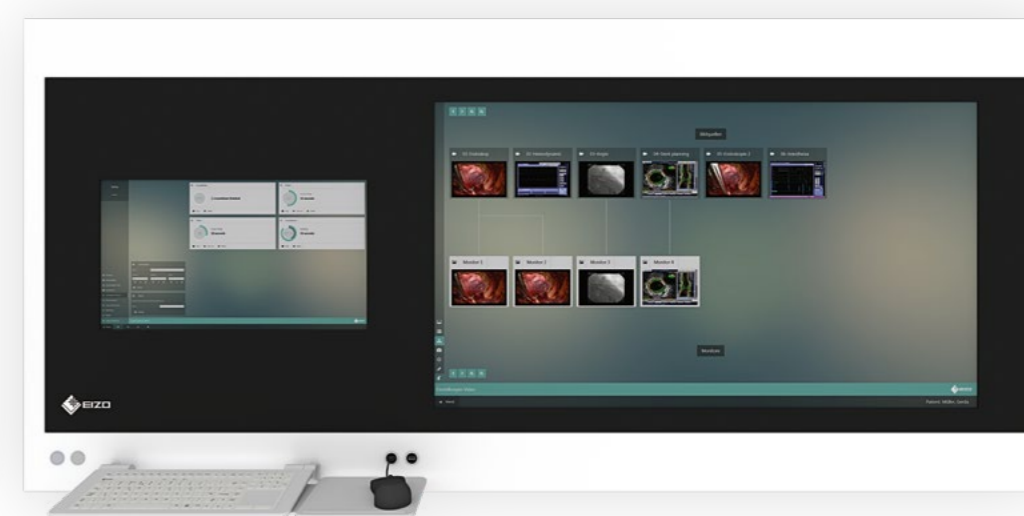
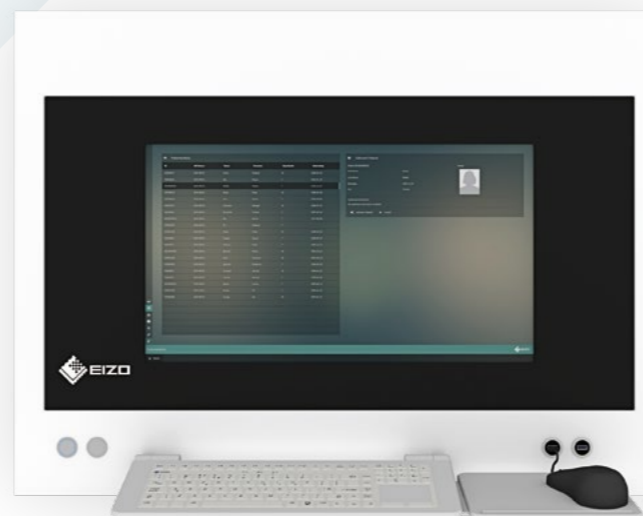
In addition to customer-specific configurations, EIZO offers a number of standard Surgical Panels optimized specifically for a range of applications and effective integration into the operating room workflow.

Nurse Station

These Surgical Panels are fitted with screen sizes that are ideal for work performed by OR nursing staff. The user-friendly configuration was designed with ergonomic head and body positions in mind and offers ideal viewing conditions when interacting with the local OR systems.

KIS/PACS Station

Surgical Panels with two integrated monitors serve as a space-saving combination of work and viewing stations. Different applications can thus be covered from a single device.



In the digital age, X-ray film and analog X-ray light boxes are a thing of the past. Today's digital systems are integrated into the hospital's IT infrastructure and support a wide range of workflows in the operating room.

Wide Ranging Monitor Options

With options to select the number, size, type and arrangement of the integrated monitors, as well as the ability to configure some as touchscreens, the Surgical Panels can be selected to optimally fit the local application needs.



Customized Housing

The housing dimensions can be customized along with the combination of the powdered stainless steel and glass housing materials. Colors from the RAL palette range can be selected to ideally suit the desired OR color scheme.



Intuitive Touch Operation

Some CuratOR Surgical Panels can be equipped with touchscreens to facilitate intuitive operation of software in the OR. For use in sterile environment they can be easily operated with gloves.



Flexible IT and Video Management



The modular interior design allows customer-specific configurations and facilitates access for service and maintenance.

OR Integration and Cleanability

With its flat surface, the Surgical Panel can be completely sealed in the front and integrated in the OR wall, ensuring safety and simple cleaning and disinfection procedures. With intelligent heat distribution over the front surface, the units do not require specialized ventilation systems.



Easy Maintenance and Service

The trunk design allows easy access to the device without complicated disassembly or tooling needs. With its unique locking system, screw connections need not be opened, making maintenance procedures on the installed components simple and efficient.



Flexible Mounting Options

The device is designed for both surface or flush-mounted installation to allow easy fit into the local architectural preferences and physical circumstances on site.



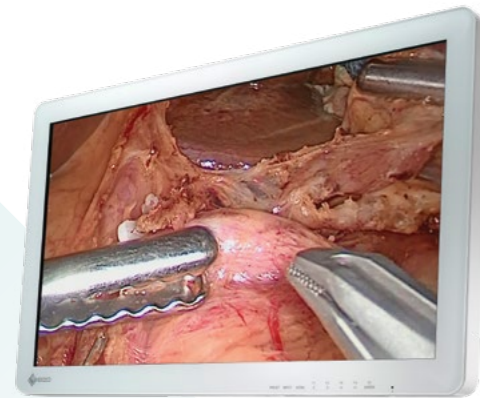
Accessories and Connectivity



With its broad connectivity options and modular design, peripheral devices can be added to the unit in accordance with local user needs.

MONITORS FOR OPERATING ROOMS

Surgical teams in the operating room depend upon the most advanced technologies. Imaging applications have developed to an essential aid. EIZO's endoscopy monitors assist surgeons perfectly in today's sophisticated medical procedures.



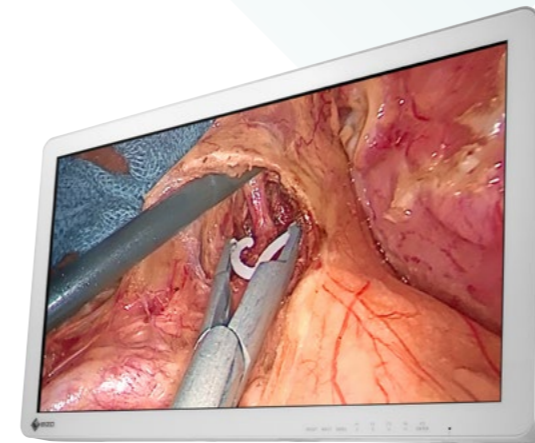
EX2620
66.1 cm (26") LCD Monitor

26"
WIDE



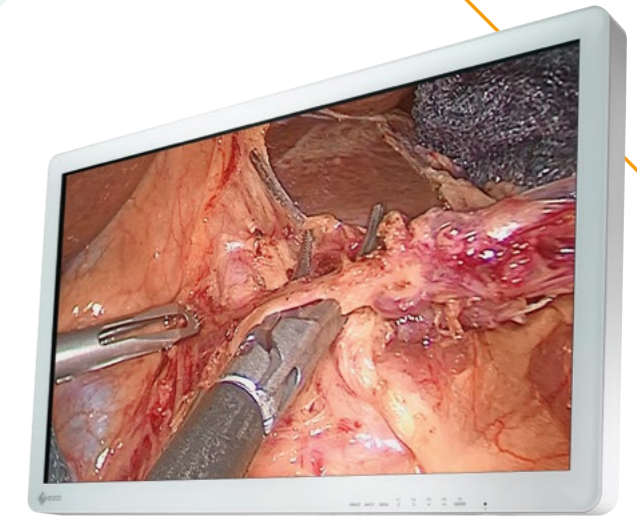
EX2621
66.1 cm (26") LCD Monitor

26"
WIDE



EX2721
68.6 cm (27") LCD Monitor

27"
WIDE

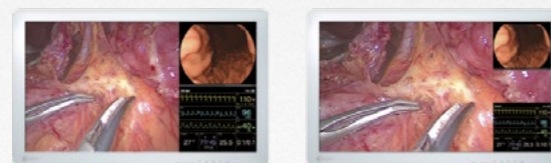


EX3220
80.1 cm (31.5") LCD Monitor

32"
WIDE

Fully Flat Design for Safety and Hygiene

In consideration of safety, EIZO's surgical monitors adopt rounded corners. Furthermore the front is covered with a fully flat protective panel that has protection against foreign material and splashes to a level of IP45 (whole monitor has IP32 rating). Additionally with the attached cable cover, cables can be stored neatly out of sight, increasing safety and hygiene in the operating room.



PoP

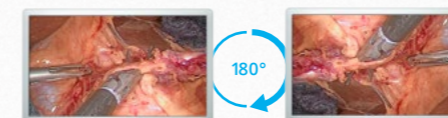
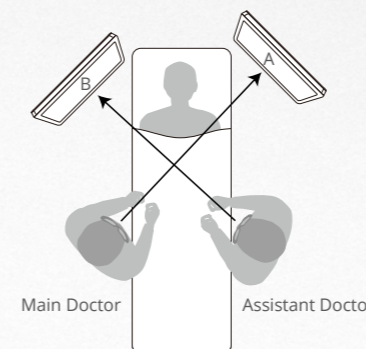
PiP

View Multiple Signals on the One Screen

Two separate signal sources can be viewed simultaneously on one monitor screen side by side (PoP, Picture out Picture) or above the main signal (PiP, Picture in Picture). With the EX2621, up to three different signal sources can be displayed at the same time (PoP and PiP). The size and position of the display windows is adjustable when using PoP or PiP.

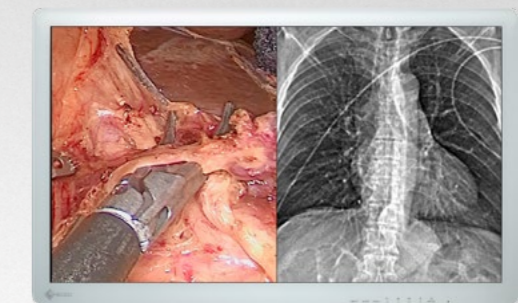
180° Rotation and Mirroring

Regardless of the orientation of the surgical camera, you can rotate the displayed image by 180° or mirror to find the perfect operating view. This allows you to match the image with the line of sight of surrounding assistants and surgeons, improving convenience in the operating room.



Monitor for
Main Doctor A

Monitor for
Assisant Doctor B



Gamma 2.2

DICOM
Preset Mode

Adjust Screens Independently from Each Other

When displaying two signal sources side by side on the same screen, each image's display mode (gamma 1.8 - 2.6 or DICOM Preset Mode) can be adjusted without interfering with the other image. This is perfect for multi-modality use, where both endoscope, CT and MRI images can be accurately displayed on the same monitor.

MONITORS FOR OPERATING ROOMS

Faithful image reproduction at the highest accuracy allows for precise work in the OR. With the 3D technology, the surgeon can see organs and tissue structures in lifelike effect of depth. Due to their ultra high resolution and additional functions like image sharpening and color reproduction, EIZO's 4K UHD monitors provide brilliant pictures in completely new dimensions.



EX2620-3D
66.1 cm (26") LCD Monitor
26" WIDE 3D

EX3220-3D
80.1 cm (31.5") LCD Monitor
32" WIDE 3D

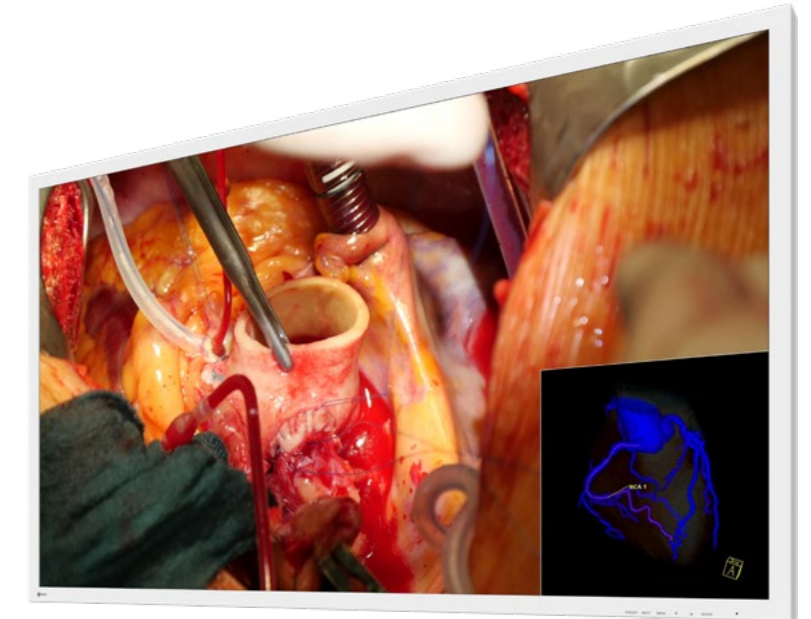
EX3141-3D
78.9 cm (31.1") LCD Monitor
31" WIDE 3D 4K



EX3140
78.9 cm (31.1") LCD Monitor
31" WIDE 4K



EX3241
81.3 cm (32") LCD Monitor
32" WIDE 4K

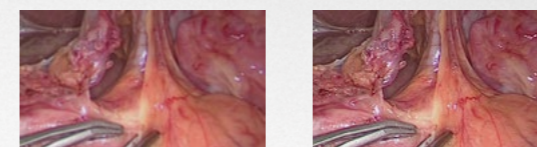
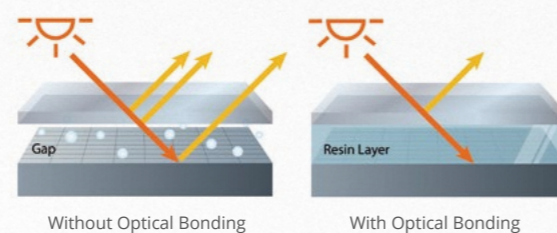


EX5841
146.1 cm (57.5") LCD Monitor
58" WIDE 4K



Reduced Reflections and High Durability

The 3D monitors and the EX3241 are manufactured with Optical Bonding. With this technology the air pocket between the LCD panel and external glass is filled by optoelastic resin. This reduces the screen reflections, prevents the LCD panel from impacts, dust and moisture and avoids condensation.



Without S.R.S.C.

With S.R.S.C.

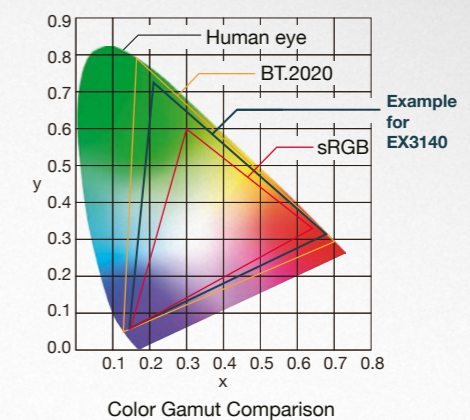
Enhanced Sharpness

The EX3141-3D, the EX3140 and the EX3241 are equipped with EIZO's proprietary image sharpening technology Smart Resolution with Sparse Coding (S.R.S.C.). Full HD images shot by conventional endoscopy and surgical cameras can be displayed in high definition 4K resolution without lag.

Also available with: EX2621.

Sharp Color Reproduction with Wide Color Gamut

Not only does the 4K UHD monitors faithfully display the sRGB color gamut, but they can also produce images emulating the 4K video color standard BT.2020. They accurately displays BT.2020-compatible camera images, increasing the range of yellowish-green to red.



MONITORS FOR OPERATING ROOMS

EIZO's surgical monitors are designed for the critical viewing and cleaning demands of the operating room. Regardless of use with an EIZO video management system or direct connection to a video source, the wide viewing angles and selectable DICOM and gamma presets make these monitors ideal for viewing all types of medical images in the surgical environment.



SCD 19102
48 cm (19") LCD Monitor

19"



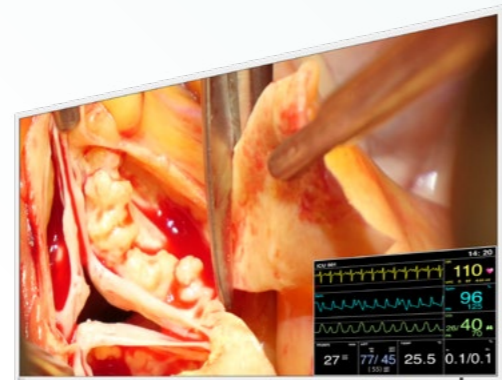
EX190
48 cm (19") LCD Monitor

19"



EX271W
68 cm (27") LCD Monitor

27"
WIDE



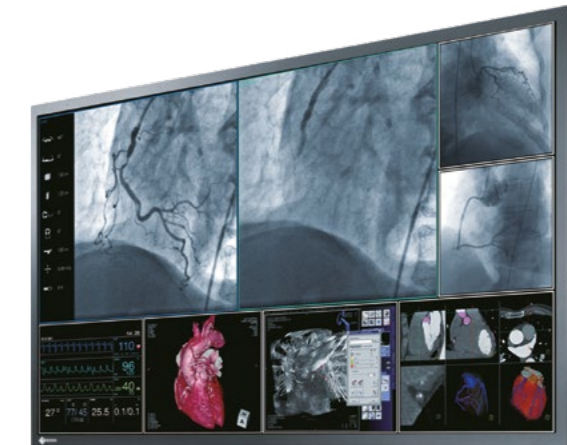
LX491W
123 cm (48.5") LCD Monitor

49"
WIDE



LX550W
138.8 cm (55") LCD Monitor

55"
WIDE



LS580W
146 cm (57.5") LCD Monitor

58"
WIDE



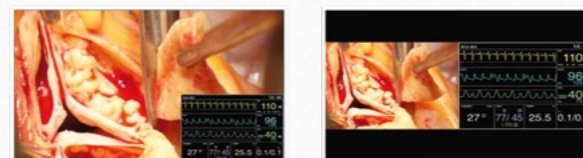
Rear EX271W



DVI TDL M12 HDL 3GS

Multi-Source Viewing

The LX491W surgical wall-mount monitor offers multiple input and loop-through connections for use with both legacy and state-of-the-art systems. With the integrated Picture-in-Picture (PiP), Picture-and-Picture (PaP), and Picture-over-Picture (PoP) viewing modes, users can view multiple video sources simultaneously, including primary source images, archived PACS content, vital signs or other source signals needed during an operation.



PiP

PaP



PoP (source preview)

Modular Design

As a modular monitor, the EX271W supports targeted connectivity and the ability to evolve with changing technological demands. Whether installed over the surgical table or mounted directly on a surgical cart, the monitor can be tailored to the individual application by selecting the appropriate input module. This not only optimizes material costs, it reduces cable clutter and the overall physical footprint and simplifies system design.

Signal transmission fail



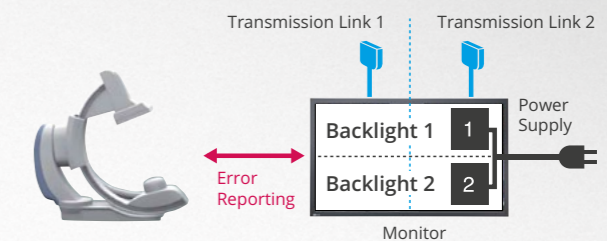
Emergency signal

Fail-Safe Function

The LX550W is equipped with a special fail-safe mode through up to two HDMI inputs for emergency information from the system for a certain timing. As soon as the timing is active, the information will be shown immediately on the upper left side and lower right side or upper right side and lower left side of the screen.

Operational Reliability

With their redundant components architecture (2 power supplies, 2 backlights, 2 transmission links), the LX550W and the LS580W ensure a high degree of operational reliability for fail-safe environments. A monitoring function can be configured to notify the X-ray system if e.g. operating conditions become critical or a component fails.



VIDEOMANAGEMENT LARGE MONITOR MANAGER

The Large Monitor Managers gather various video inputs, combine and arrange them in accordance with user preferences, and display the resulting output flexibly on the connected monitors.



LMM0802

Large Monitor Manager
12 inputs, 4K monitor



LMM0804

Large Monitor Manager
12 inputs, 5 x FHD monitor



LMM56800

Large Monitor Manager
26 inputs, 4K monitor

All Gather in One to Optimize Workflow

The Large Monitor Managers bundle up different signal sources and enable you to control them from one location. Individual image placement and window size preferences can be easily arranged and recalled using the Large Monitor Managers.



Centralize Working Place

Working with the LMM0802, the operator can focus on a single monitor, keyboard and mouse instead of juggling with multiple systems. This speeds up workflow and reduces the potential for handling errors. Alternatively, two independent work spaces can be secured when, for example, there is one person responsible for modality information and one person responsible for PACS.

Local and Remote Control



Layout configuration, editing and selection can be performed with a locally attached keyboard and mouse, or via remote browser connected through the web-interface. EIZO offers suitable medical touchscreens like the CID1201P to allow users at the surgical table to quickly and conveniently select among the predefined layouts.

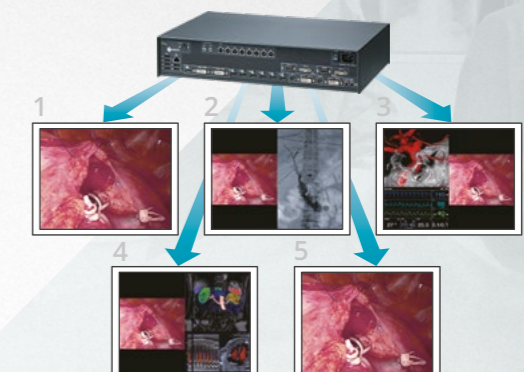


Added Inputs and Outputs

For the LMM0802 and the LMM0804, up to 24 video sources and 10 additionally connectable monitors are possible when combined with the Gefen Matrix.

Layout Differently on Multiple Monitors

With the LMM0804, up to 8 signal sources can be displayed simultaneously on a maximum of 5 connected monitors. The necessary source information can be selected and displayed independently. This is useful when the staff in surgeries stands in different positions and needs different information.



VIDEOMANAGEMENT OVER IP



Mobile systems
The standardized network interface simplifies the integration of mobile systems.

USB A/B
Audio In/Out
Video A In/Out
Video B Out

Extended distances
The transmission via fiber-optic cable enables image and audio transmission to other ORs, conference rooms or lecture halls.

Future-Proof and Flexible
The standardized, modular extendable network solution Alipe ensures a IP based transmission of different data without visible delay but also over long distances. Different devices and technologies can be linked intelligently with each other.



TIPO210-DVI
IP-Transceiver FHD



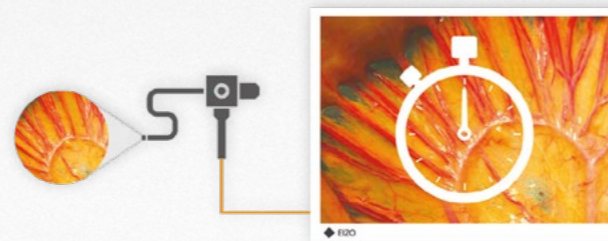
TIPO410-HDMI
IP-Transceiver 4K/30Hz, FHD/60Hz



TIPO810-HDMI
IP-Transceiver 4K/60Hz

Loss-Free Data Transmission with Maximum Image Quality

The Alipe IP-Transceiver allow for a transmission speed of up to 10 Gbit/sec. as well as image transmission of up to 4K resolution and a frame rate of up to 60 Hz. The devices work without compression, ensuring optimum image quality.



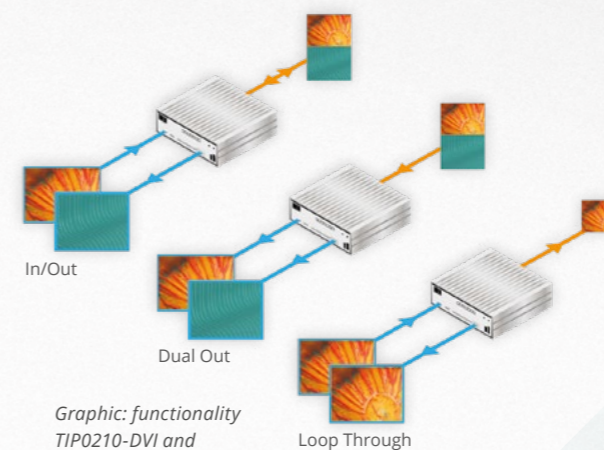
Zero Latency

Images are transmitted with minimal delay at a single frame rate, offering excellent hand-eye coordination for the attending physician. He/she receives direct visual response to his/her actions, for example during endoscopic interventions.



Device with Universal Application

The IP-Transceiver can be used as an encoder and decoder. The connector functionality parameters are set through the software. The number of devices and versions can thus be reduced. Additionally up to two video links can be processed concurrently with one TIPO210-DVI or TIPO410-HDMI.



Graphic: functionality TIPO210-DVI and TIPO410-HDMI

Integrated Video Management

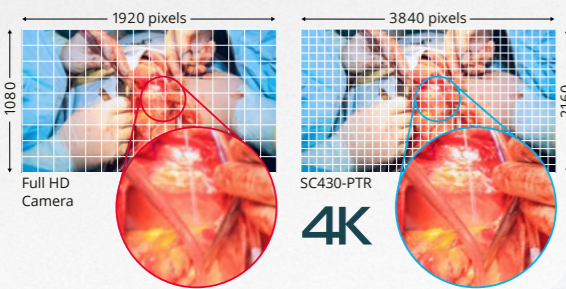
Various video sources can be displayed simultaneously on a screen using a single cable. This enables various multiple views, for example Side-by-Side, Picture-in-Picture, and QuadView.

SURGICAL FIELD CAMERA SYSTEM

Capturing surgical proceedings in detail is vital for various purposes. The CuratOR SC430-PTR clearly captures the surgical field in 4K UHD resolution, and comes fully integrated with a triaxial camera mount for versatile positioning.

SC430-PTR

4K/60p Surgical Field Camera
4K

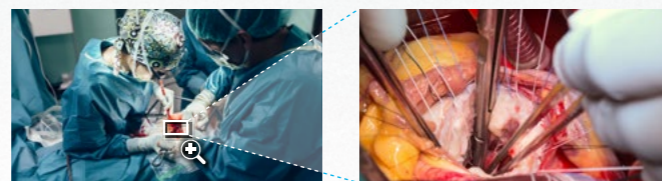


4K Ultra-High Definition Resolution

The surgical field camera captures images in 4K UHD resolution (3840 x 2160) with a progressive 60 Hz signal for smooth, high definition images of the surgical site.

Zoom into Narrow Target Areas in Detail

The camera lens has up to 30x optical zoom, allowing the camera to easily zoom into small, target areas. Even when positioned at a safe distance, the camera can clearly zoom into and capture narrow surgical sites in detail.



1 x Zoom

30 x Zoom



Intuitive Panning and Tilting Direction

The camera head is integrated with the camera mount, allowing left and right, and up and down movements to remain parallel to the field of view, even after rolling. When panning or tilting, the camera head moves in relation to the field of view, rather than the position of the camera head like unintegrated cameras. This ensures intuitive and effortless panning and tilting.

On typical camera mounts, roll and pan functions operate independently, which can sometimes make it difficult to move the camera in the intended direction.

Smooth Positioning at High Zoom

With unique and intelligent stepping technology, as the camera zooms in, the pan, tilt, and roll movements slow down to prevent the field of view from moving too quickly. With easily controllable movements, even under high zoom, preparation for surgery is made quicker and easier.



Movement



Without Stepping



With Stepping



Camera Control Unit (CCU)

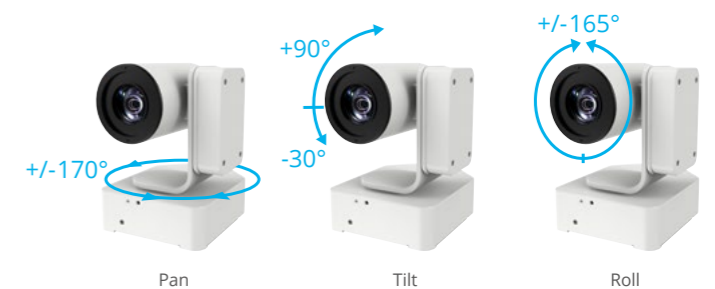
Remote Control

Convenient Camera Control from Anywhere

Camera movement, focus, and white balance can be adjusted using the front panel of the Camera Control Unit (CCU), or the supplied wireless remote control. Additionally, the CCU panel comes with a joystick for intuitive control. The camera can also be controlled from OR software, such as CuratOR Caliop.

Fully Integrated Camera Mount

The camera head comes fully integrated on a camera mount with +/-170 degrees pan, +90 to -30 degrees tilt, and +/-165 degrees roll to ensure that the field of view can be adjusted to the ideal location with ease.



Pan

Tilt

Roll

SIGNAL ROUTING DEVICES

EIZO also offers flexible and easy-to-install signal routing solutions for use with its monitors and Large Monitor Managers.



PDC0100
Analog-DVI Converter

Analog to Digital Converter

PDC0100 converts analog video to digital DVI format. The integrated Force Mode function supports unique analog input signals. With a range of accessories and high interconnectivity, the converter allows maximum flexibility for integration into existing systems.



TID0102
DVI Splitter

Split, Configure, Transmit

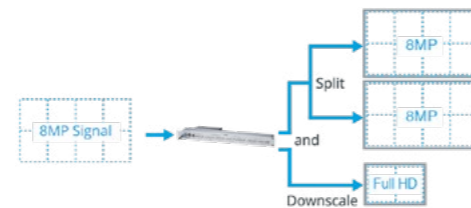
The TID0102 splits the DVI signal from the LMM0804 into two configurable signals. The TID0102-HDL provides additional HDL transmission technology to enable video transmission via traditional CAT cables at a distance of up to 70 m.



PDS0800-HD
DVI Splitter / Scaler

Signal Splitter

By utilizing PDS0800-HD, signals coming from LMM56800 or LMM0802 are repeated and doubled to connect two 8 megapixel monitors. The HD output generates a downscaled representation of the content displayed on the large screen.



LMM0804
(Instead of LMM0804 any DVI Single Link source possible)



TID0102

DVI

DVI

TID0102

- HDL
- DVI
- HDL
- DVI

DVI

DVI

HDL connection
(only with TID0102-HDL)

HDL

HDL connection
(with TID0102-HDL only)

HDL



Up to 70 m

Up to 70 m



TDL3600 / TDL2300
DVI Transmission Link

Signal Transmission for a Long Distance

TDL enables transmission of high-quality video data of distance up to 36 meters with no quality loss. Ethernet cable transmission allows robust handling and simple setup which easily runs through small conduits and holes.



When using with EX271W: up to 30 meters

ACCESSORIES

CONNECTION PARTS

Signal Cables and Adapters

EIZO offers a variety of cables and adapters suitable for the signal inputs of the monitors.



SCC300

Short camera cable for the operation field camera SC430-PTR.



TDL Components

Different TDL transmitters and receivers, as well as TDL cables of different lengths, are offered in predefined link sets or may be ordered individually in accordance with specific application needs.



Input Modules

EIZO offers a range of input modules for the modular EX271W monitor with which various input signals can be connected in accordance with the specific application needs.

TRM0000-DVI DVI connector (1080p)



TRM0000-TDL RJ45 connector for TDL link connections



TRM0000-M12 M12 connector for M12 TDL link connections



TRM0000-HDL RJ45 connector for HDL link connections



TRM0000-3GS BNC connector for SDI video sources (1080p) x 2 (input/output)



ALIPE ACCESSORIES

Network Components

For the compilation of a complete IP transmission solution, network switches and connection components are available.



WALL MOUNTS AND STANDS

Wall Mount

FWM6300

Compatible with EX5841, LS580W, LX550W and LX491W



Stand

FST5600

Compatible with LS580W and LX550W



Stand

FST4700

Compatible with LX491W



Stand

HST01

Compatible with EX2620, EX2621, EX2721 and EX2620-3D



HST02

Compatible with EX3220, EX3220-3D



HST03

Compatible with EX3140 and EX3241



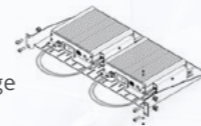
HST04

Compatible with EX3141-3D



Mounts for Alipe

Various brackets allow easy and secure mounting of IP-transceivers on the image source, on the monitor or in a rack.



Cable & TDL Holder

FMM0800

Compatible with LMM0802 and LMM0804



Holder for 2 DVI Splitter

FMM0102

Compatible with TID0102



PROTECTION SCREEN

FPP5800

Compatible with LS580W



FPP5500

Compatible with LX550W



GLASSES

H3G01

3D glasses for EX2620-3D, EX3220-3D and EX3141-3D



SPECIFICATIONS

SURGICAL PANELS

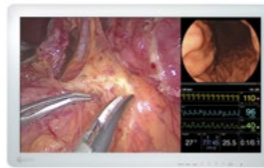


Model Name		CuratOR Surgical Panel SP1-24	CuratOR Surgical Panel SP1-49	CuratOR Surgical Panel SP2-24	CuratOR Surgical Panel SP2-24-49
Model Variations		SP1-24: without touchscreen SP1-24T: with touchscreen	SP1-49: without touchscreen SP1-49T: with touchscreen	-	SP2-24-49: without touchscreen SP2-24T-49: with touchscreen (24"™)
Housing	Material	Powder-coated stainless steel	Powder-coated stainless steel	Powder-coated stainless steel	Powder-coated stainless steel
	Front	Combination of stainless steel and anti-reflective safety glass (ESG)	Combination of stainless steel and anti-reflective safety glass (ESG)	Combination of stainless steel and anti-reflective safety glass (ESG)	Combination of stainless steel and anti-reflective safety glass (ESG)
	Color	Available in every RAL color	Available in every RAL color	Available in every RAL color	Available in every RAL color
Mounting Options		Suitable for flush mounting or surface mounting	Suitable for flush mounting or surface mounting	Suitable for flush mounting or surface mounting	Suitable for flush mounting or surface mounting
Panel 1	Size	24"	49"	24"	24"
	Diagonal	61 cm (16:10 aspect ratio)	123 cm (16:9 aspect ratio)	60 cm (16:9 aspect ratio)	60 cm (16:9 aspect ratio)
	Panel Type	Color TFT LCD Panel (IPS) with DICOM Preset	Color TFT LCD Panel with DICOM Preset	Color TFT LCD Panel (IPS) with DICOM Preset	Color TFT LCD Panel (IPS) with DICOM Preset
	Native Resolution	1920 × 1200 (2.3 MP)	1920 × 1080 (Full HD)	1920 × 1080 (2.07 MP)	1920 × 1080 (2.07 MP)
	Display Colors	16.7 million colors	16.7 million colors	16.7 million colors	16.7 million colors
	Pixel Pitch	0.270 mm x 0.270 mm	0.559 mm x 0.559 mm	0.274 mm x 0.274 mm	0.274 mm x 0.274 mm
	Brightness (typical)	300 cd/m ²	700 cd/m ²	250 cd/m ²	250 cd/m ²
	Contrast Ratio (typical)	1000:1	1300:1	1000:1	1000:1
	Viewing Angles (H / V, maximum)	178°, 178°	178°, 178°	178°, 178°	178°, 178°
	Touchscreen	Projected capacitive, multi-touch (SP1-24T only)	Projected capacitive, multi-touch (SP1-49T only)	-	-
	Response Time (typical)	5 ms (Midtone)	8.0 ms (Midtone)	5.0 ms (Midtone)	5.0 ms (Midtone)
	Backlight	LED	LED	LED	LED
Signal Inputs	DisplayPort, HDMI, DVI-D, DSub	DVI-I (internal), others on request	DisplayPort, HDMI, DVI-I, DSub	DisplayPort, HDMI, DVI-I, DSub	
Panel 2	Size	-	-	24"	49"
	Diagonal	-	-	60 cm (16:9 aspect ratio)	123 cm (16:9 aspect ratio)
	Panel Type	-	-	Color TFT LCD Panel (IPS) with DICOM Preset	Color TFT LCD Panel with DICOM Preset
	Native Resolution	-	-	1920 × 1080 (2.07 MP)	1920 × 1080 (Full HD)
	Display Colors	-	-	16.7 million colors	1.07 billion colors
	Pixel Pitch	-	-	0.274 mm x 0.274 mm	0.559 mm x 0.559 mm
	Brightness (typical)	-	-	250 cd/m ²	700 cd/m ²
	Contrast Ratio (typical)	-	-	1000:1	1300:1
	Viewing Angles (H / V, maximum)	-	-	178°, 178°	178°, 178°
	Response Time (typical)	-	-	5.0 ms (Midtone)	8.0 ms (Midtone)
	Backlight	-	-	LED	LED
	Signal Inputs	-	-	DisplayPort, HDMI, DVI-I, DSub	DVI-I (internal), others on request
IT Components		INTEL® Core™ i5 processor - 3.x GHz, INTEL® Chipset, 6 MB L3 Cache, 8 GB DDR3 RAM (extendable), SATA HDD or SATA SSD, LAN RJ 45 - 10/100/1000 Base TX	INTEL® Core™ i5 processor - 3.x GHz, INTEL® Chipset, 6 MB L3 Cache, 8 GB DDR3 RAM (extendable), SATA HDD or SATA SSD, LAN RJ 45 - 10/100/1000 Base TX	INTEL® Core™ i5 processor - 3.x GHz, INTEL® Chipset, 6 MB L3 Cache, 8 GB DDR3 RAM (extendable), SATA HDD or SATA SSD, LAN RJ 45 - 10/100/1000 Base TX	INTEL® Core™ i5 processor - 3.x GHz, INTEL® Chipset, 6 MB L3 Cache, 8 GB DDR3 RAM (extendable), SATA HDD or SATA SSD, LAN RJ 45 - 10/100/1000 Base TX
Operating System		MS Windows 10 Pro	MS Windows 10 Pro	MS Windows 10 Pro	MS Windows 10 Pro
Keyboard/Mouse		Anti-microbial medical silicone keyboard with integrated mouse storage (foldable), silicone mouse (visual 5 keys, laser mouse /IP65)	Anti-microbial medical silicone keyboard with integrated mouse storage (foldable), silicone mouse (visual 5 keys, laser mouse /IP65)	Anti-microbial medical silicone keyboard with integrated mouse storage (foldable), silicone mouse (visual 5 keys, laser mouse /IP65)	Anti-microbial medical silicone keyboard with integrated mouse storage (foldable), silicone mouse (visual 5 keys, laser mouse /IP65)
Inputs		USB 2.0 / 3.0 x 2 (front side)	USB 2.0 / 3.0 x 2 (front side)	USB 2.0 / 3.0 x 2 (front side)	USB 2.0 / 3.0 x 2 (front side)
Push Buttons		Main switch (front side) System switch (front side)	Main switch (front side) System switch (front side)	Main switch (front side) System switch (front side)	Main switch (front side) System switch (front side)
Maximum Power Consumption		157.7 W	271.5 W	216.5 W	326.4 W
Power Requirements		100 - 240 V / 50 - 60 Hz / 4 - 2 A	100 - 240 V / 50 - 60 Hz / 4 - 2 A	100 - 240 V / 50 - 60 Hz / 4 - 2 A	100 - 240 V / 50 - 60 Hz / 4 - 2 A
Thermal Load		567.7 kJ/h	977.4 kJ/h	779.4 kJ/h	1175.0 kJ/h
Net Weight		appr. 36 kg	appr. 72 kg	appr. 44 kg	appr. 95 kg
Certifications and Standards (Please contact EIZO for the latest information.)		CE, IEC/EN 62368-1, IEC/EN 60601-1-2, RoHS, WEEE	CE, IEC/EN 62368-1, IEC/EN 60601-1-2, RoHS, WEEE	CE, IEC/EN 62368-1, IEC/EN 60601-1-2, RoHS, WEEE	CE, IEC/EN 62368-1, IEC/EN 60601-1-2, RoHS, WEEE
Dimensions (Unit: mm)	Niche (WxHxD)	860x635x140	1410x910x140	1410x635x140	2010x910x140
	Device (WxHxD)	850x625x120	1400x900x120	1400x625x120	2010x910x140

MONITORS



CuratOR EX2620 **26" WIDE**



CuratOR EX2621 **26" WIDE**



CuratOR EX2721 **27" WIDE**



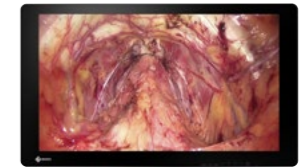
CuratOR EX3220 **32" WIDE**



CuratOR EX2620-3D **26" WIDE 3D**



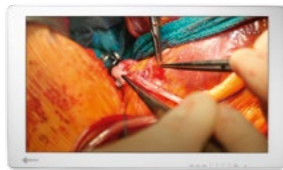
CuratOR EX3220-3D **32" WIDE 3D**



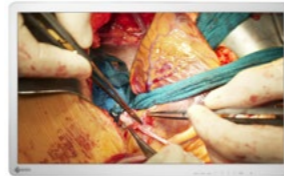
CuratOR EX3141-3D **31" WIDE 4K**

Model Variations	EX2620-WT: without stand	EX2621-WT: without stand	EX2721-WT: without stand	EX3220-WT: without stand	EX2620-3D-WT: without stand	EX3220-3D-WT: without stand	EX3141-3D-WT: without stand	
Cabinet Color	White	White	White	White	Black (front), white (rear)	Black (front), white (rear)	Black (front), white (rear)	
Panel	Type	Color (IPS)	Color (IPS)	Color (IPS)	Color (IPS)	Color (IPS)	Color (IPS)	
	Backlight	LED	LED	LED	LED	LED	LED	
	Size	66.1 cm / 26.0"	66.1 cm / 26.0"	68.6 cm / 27.0"	80.1 cm / 31.5"	66.1 cm / 26.0"	80.1 cm / 31.5"	78.9 cm / 31.1"
	Native Resolution	1920 x 1080 (16:9 aspect ratio)	1920 x 1080 (16:9 aspect ratio)	1920 x 1080 (16:9 aspect ratio)	1920 x 1080 (16:9 aspect ratio)	1920 x 1080 (16:9 aspect ratio)	1920 x 1080 (16:9 aspect ratio)	3840 x 2160 (16:9 aspect ratio)
	Viewable Image Size (H x V)	576 x 324 mm	576 x 324 mm	598 x 336 mm	698 x 393 mm	576 x 324 mm	698 x 393 mm	654 x 368 mm
	Pixel Pitch	0.300 x 0.300 mm	0.300 x 0.300 mm	0.311 x 0.311 mm	0.364 x 0.364 mm	0.300 x 0.300 mm	0.364 x 0.364 mm	0.170 x 0.170 mm
	Display Colors	10-bit colors (SDI): 1.07 billion (maximum) colors 8-bit colors: 16.77 million colors	10-bit colors (SDI): 1.07 billion (maximum) colors 8-bit colors: 16.77 million colors	10-bit colors (SDI): 1.07 billion (maximum) colors 8-bit colors: 16.77 million colors	10-bit colors (SDI): 1.07 billion (maximum) colors 8-bit colors: 16.77 million colors	10-bit colors (SDI): 1.07 billion (maximum) colors 8-bit colors: 16.77 million colors	10-bit colors (SDI): 1.07 billion (maximum) colors 8-bit colors: 16.77 million colors	10-bit colors (SDI) / DisplayPort: 1.07 billion (maximum) colors 8-bit colors: 16.77 million colors
	Viewing Angles (H / V, typical)	178° / 178°	178° / 178°	178° / 178°	178° / 178°	178° / 178° (2D mode)	178° / 178° (2D mode)	178° / 178° (2D mode)
	Brightness (typical)	700 cd/m ²	700 cd/m ²	900 cd/m ²	650 cd/m ²	580 cd/m ²	650 cd/m ²	450 cd/m ²
	Contrast Ratio (typical)	1400:1	1400:1	1000:1	1400:1	1400:1	1400:1	1300:1
	Response Time (typical)	18 ms (black-white-black)	18 ms (black-white-black)	14 ms (black-white-black)	16 ms (black-white-black)	18 ms (black-white-black)	16 ms (black-white-black)	20 ms (black-white-black)
Gamut Coverage (typical)	sRGB	sRGB	sRGB	sRGB	sRGB	sRGB	BT.2020 emulation	
Video Signals	Input Terminals	BNC (3G-SDI) x 2, DVI-D x 2 (HDCP 1.4), D-Sub 15 pin (mini), BNC (RGB C-Sync or Component), S-Video, BNC (Composite)	BNC (3G-SDI) x 2, DVI-D x 2 (HDCP 1.4), D-Sub 15 pin (mini), BNC (RGB C-Sync or Component), S-Video, BNC (Composite)	BNC (3G-SDI), DVI-D x 2 (HDCP 1.4), D-Sub 15 pin (mini), S-Video, BNC (Composite)	BNC (3G-SDI) x 2, DVI-D x 2 (HDCP 1.4), D-Sub 15 pin (mini), BNC (RGB C-Sync or Component), S-Video, BNC (Composite)	BNC (3G-SDI) x 2, DVI-D x 2 (HDCP 1.4), D-Sub 15 pin (mini), BNC (RGB C-Sync or Component), S-Video, BNC (Composite)	BNC (3G-SDI) x 2, DVI-D x 2 (HDCP 1.4), D-Sub 15 pin (mini), BNC (RGB C-Sync or Component), S-Video, BNC (Composite)	DisplayPort (HDCP 1.3), HDMI (HDCP 2.2/1.4), BNC (12G-SDI), BNC (3G-SDI), DVI-D x 2 (HDCP 1.4)
	Output Terminals (Loop Through)	BNC (3G-SDI), DVI-D, S-Video, BNC (Composite)	BNC (3G-SDI) x 2, DVI-D, BNC (RGB C-Sync or Component), S-Video, BNC (Composite)	BNC (3G-SDI), DVI-D, S-Video, BNC (Composite)	BNC (3G-SDI) x 2, DVI-D, BNC (RGB C-Sync or Component), S-Video, BNC (Composite)	BNC (3G-SDI) x 2, DVI-D, BNC (RGB C-Sync or Component), S-Video, BNC (Composite)	BNC (3G-SDI) x 2, DVI-D, BNC (RGB C-Sync or Component), S-Video, BNC (Composite)	BNC (12G-SDI), BNC (3G-SDI), DVI-D
	Digital Scanning Frequency (H / V)	15 - 75 kHz / 24 - 60 Hz	15 - 75 kHz / 24 - 60 Hz	15 - 75 kHz / 24 - 60 Hz	15 - 75 kHz / 24 - 60 Hz	15 - 75 kHz / 24 - 60 Hz	15 - 75 kHz / 24 - 60 Hz	27 - 135 kHz / 24 - 60 Hz
	Analog Scanning Frequency (H / V)	15 - 80 kHz / 24 - 85 Hz	15 - 80 kHz / 24 - 85 Hz	15 - 80 kHz / 24 - 85 Hz	15 - 80 kHz / 24 - 85 Hz	15 - 80 kHz / 24 - 85 Hz	15 - 80 kHz / 24 - 85 Hz	-
	Sync Formats	Separate, Composite, Sync on green	Separate, Composite, Sync on green	Separate, Composite, Sync on green	Separate, Composite, Sync on green	Separate, Composite, Sync on green	Separate, Composite, Sync on green	-
USB	Upstream	-	-	-	-	-	USB 2.0: Type-B (CDC)	
	Power Requirements	AC 100 - 240 V: 50 / 60 Hz	AC 100 - 240 V: 50 / 60 Hz	AC 100 - 240 V: 50 / 60 Hz	AC 100 - 240 V: 50 / 60 Hz	AC 100 - 240 V: 50 / 60 Hz	AC 100 - 240 V: 50 / 60 Hz	
Power	Maximum Power Consumption	90 W	96 W	79 W	97 W	95 W	219 W	
	OSD Languages	English, German, French, Italian, Spanish, Swedish, Japanese, Simplified Chinese, Traditional Chinese	English, German, French, Italian, Spanish, Swedish, Japanese, Simplified Chinese, Traditional Chinese	English, German, French, Italian, Spanish, Swedish, Japanese, Simplified Chinese, Traditional Chinese	English, German, French, Italian, Spanish, Swedish, Japanese, Simplified Chinese, Traditional Chinese	English, German, French, Italian, Spanish, Swedish, Japanese, Simplified Chinese, Traditional Chinese	English, German, French, Italian, Spanish, Swedish, Japanese, Simplified Chinese, Traditional Chinese	English, German, French, Italian, Spanish, Swedish, Japanese, Simplified Chinese, Traditional Chinese
Features & Functions	Remote control (RS-232C, GPI), PIP, PoP	Remote control (RS-232C, GPI), 3PIP, 3PoP, S.R.S.C.	Remote control (RS-232C, GPI), PIP, PoP	Remote control (RS-232C, GPI), PIP, PoP	3D (Side by Side, Line by Line, Top and Bottom, SIMUL), Remote control (RS-232C, GPI), PIP, PoP, Optical Bonding	3D (Side by Side, Line by Line, Top and Bottom, SIMUL), Remote control (RS-232C, GPI), PIP, PoP, Optical Bonding	4K 3D (Side by Side, Line by Line, Top and Bottom), 3D (Side by Side, Line by Line, Top and Bottom, SIMUL), Remote control (USB, RS-232C), PoP, S.R.S.C., Optical Bonding	
	Net Weight (Without Stand)	8.1 kg	8.4 kg	8.5 kg	9.9 kg	8.5 kg	10.2 kg	14.0 kg
Physical Specifications	Hole Spacing (VESA Standard)	100 x 100 mm, M4, depth 5 - 9 mm	100 x 100 mm, M4, depth 5 - 9 mm	100 x 100 mm, M4, depth 5 - 9 mm	200 x 200 mm, M6, depth 7 - 10 mm / 100 x 100 mm, M4, depth 5 - 9 mm	100 x 100 mm, M4, depth 5 - 9 mm	200 x 200 mm, M6, depth 7 - 10 mm / 100 x 100 mm, M4, depth 5 - 9 mm	200 x 200 mm, M6, depth 7 - 11 mm / 100 x 100 mm, M4, depth 7 - 9 mm
	Degree of Protection	IP45 (Front), IP32 (Rear)	IP45 (Front), IP32 (Rear)	IP45 (Front), IP32 (Rear)	IP45 (Front), IP32 (Rear)	IP45 (Front), IP32 (Rear)	IP45 (Front), IP32 (Rear)	IP45 (Front), IP32 (Rear)
Environmental Requirements	Certifications and Standards (Please contact EIZO for the latest information.)	CE (Medical Device), EN60601-1, ANSI/AAMI ES60601-1, CSA C22.2 No. 601-1, IEC60601-1, VCCI-A, FCC-A, CAN ICES-3(A), RCM, RoHS, China RoHS, WEEE, CCC, EAC, BIS	CE (Medical Device), EN60601-1, ANSI/AAMI ES60601-1, CSA C22.2 No. 601-1, IEC60601-1, VCCI-A, FCC-A, CAN ICES-3(A), RCM, RoHS, China RoHS, WEEE, CCC, EAC, BIS	CE (Medical Device), EN60601-1, ANSI/AAMI ES60601-1, CSA C22.2 No. 601-1, IEC60601-1, VCCI-A, FCC-A, CAN ICES-3(A), RCM, RoHS, China RoHS, WEEE, CCC, EAC, BIS	CE (Medical Device), EN60601-1, ANSI/AAMI ES60601-1, CSA C22.2 No. 601-1, IEC60601-1, VCCI-A, FCC-A, CAN ICES-3(A), RCM, RoHS, China RoHS, WEEE, CCC, EAC, BIS	CE (Medical Device), EN60601-1, ANSI/AAMI ES60601-1, CSA C22.2 No. 601-1, IEC60601-1, VCCI-A, FCC-A, CAN ICES-3(A), RCM, RoHS, China RoHS, WEEE, CCC, EAC, BIS	CE (Medical Device), EN60601-1, ANSI/AAMI ES60601-1, CSA C22.2 No. 601-1, IEC60601-1, VCCI-A, FCC-A, CAN ICES-3(A), RCM, RoHS, China RoHS, WEEE, CCC, EAC, BIS	CE (Medical Device), EN60601-1, ANSI/AAMI ES60601-1, CSA C22.2 No. 601-1, IEC60601-1, VCCI-A, FCC-A, CAN ICES-3(A), RCM, RoHS, China RoHS, WEEE, CCC, EAC, BIS
	FDA	Class I	Class I	Class I	Class I	Class I	Class I	Class I
Supplied Accessories	AC power cord, AC adapter, screws for VESA adapter x 4, cable cover, Utility Disk (PDF installation manual), instructions for use	AC power cord, AC adapter, screws for VESA adapter x 4, cable cover, Utility Disk (PDF installation manual), instructions for use	AC power cord, AC adapter, screws for VESA adapter x 4, cable cover, Utility Disk (PDF installation manual), instructions for use	AC power cord, AC adapter, screws for VESA adapter x 4, cable cover, Utility Disk (PDF installation manual), instructions for use	AC power cord, AC adapter, screws for VESA adapter x 4, 3D fogless polarized glasses x 3, cable cover, Utility Disk (PDF installation manual), instructions for use	AC power cord, AC adapter, screws for VESA adapter x 4, 3D fogless polarized glasses x 3, cable cover, Utility Disk (PDF installation manual), instructions for use	AC power cord, AC adapter, screws for VESA adapter x 8, 3D fogless polarized glasses x 3, cable cover, Utility Disk (PDF installation manual), instructions for use	
Dimensions (Unit: mm)								
Connectors								

MONITORS



CuratOR EX3140 **31" WIDE** 4K



CuratOR EX3241 **32" WIDE** 4K



CuratOR EX5841 **58" WIDE** 4K



RadiForce EX271W **27" WIDE**



CuratOR LX491W **49" WIDE**

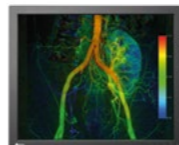
Model Variations		EX3140-WT: without stand	EX3241-WT: without stand	EX5841: without stand	EX271W-DVI: with DVI input module EX271W-TDL: with TDL input module EX271W-HDL: with HDL input module EX271W-3GS: with 3GS input module	LX491W: without stand
Cabinet Color		White	White	White	White	Black, White
Panel	Type	Color (IPS)	Color (IPS)	Color	Color (IPS)	Color (IPS)
	Backlight	LED	LED	LED	LED	LED
	Size	78.9 cm / 31.1" (789 mm diagonal)	81.3 cm / 32.0"	146.1 cm / 57.5"	68.6 cm / 27"	123 cm / 48.5"
	Native Resolution	3840 x 2160 (16:9 aspect ratio)	3840 x 2160 (16:9 aspect ratio)	3840 x 2160 (16:9 aspect ratio)	1920 x 1080 (16:9 aspect ratio)	1920 x 1080 (16:9 aspect ratio)
	Viewable Image Size (H x V)	654 x 368 mm	708 x 399 mm	1270 x 721 mm	597.8 x 336.3 mm	1073.8 x 604 mm
	Pixel Pitch	0.170 x 0.170 mm	0.185 x 0.185 mm	0.331 x 0.334 mm	0.311 x 0.311 mm	0.559 x 0.559 mm
	Display Colors	10-bit colors (SDI / DisplayPort): 1.07 billion (maximum) colors 8-bit colors: 16.77 million colors	10-bit colors (SDI/DisplayPort/HDMI): 1.07 billion (maximum) colors 8-bit colors: 16.77 million colors	10-bit colors (SDI / DisplayPort) : 1.07 billion (maximum) colors 8-bit colors: 16.77 million from a palette of 68 billion colors	8-bit colors: 16.77 million colors	8-bit colors: 16.77 million colors
	Viewing Angles (H / V, typical)	178° / 178°	178° / 178°	178° / 178°	178° / 178°	178° / 178°
	Brightness (typical)	350 cd/m ²	700 cd/m ²	300 cd/m ² (calibrated)	600 cd/m ²	700 cd/m ²
	Contrast Ratio (typical)	1500:1	1000:1	1000:1 (calibrated)	1000:1	1300:1
Response Time (typical)	20 ms (black-white-black)	18 ms (black-white-black)	9.5 ms (Midtone)	8 ms (Midtone)	8 ms (Midtone)	
Gamut Coverage (typical)	BT.2020 emulation	BT.2020 emulation	NTSC 88%, BT.2020 emulation	-	-	
Video Signals	Input Terminals	DisplayPort (HDCP 1.3), BNC (3G-SDI) x 4, DVI-D x 2 (HDCP 1.4)	DisplayPort (HDCP 1.3), HDMI (HDCP 2.2/1.4), BNC (12G-SDI), BNC (3G-SDI), DVI-D x 2 (HDCP 1.4)	DisplayPort 1.2, HDMI, DVI-D Single Link, BNC (12G-SDI)	EX271W-DVI: DVI-D EX271W-TDL: RJ45 (TDL) EX271W-HDL: RJ45 (HDL) EX271W-3GS: BNC (3G-SDI) or M12 (TDL, with TRM0000-M12 Input Module, optional)	DVI-I, DVI-D, BNC (3G-SDI), BNC (Composite), D-Sub mini 15pin (Separate Sync, Composite Sync, SoG*, YPbPr*, RGB*, RGB/HV*), 4pin mini-DIN (S-Video) *adapter (D-Sub mini 15pin - BNC) required
	Output Terminals (Loop Through)	BNC (3G-SDI) x 4, DVI-D	BNC (12G-SDI), BNC (3G-SDI), DVI-D	BNC (12G-SDI)	BNC (3G-SDI, EX271W-3GS only)	BNC (3G-SDI), BNC (Composite), 4pin mini-DIN (S-Video), D-Sub mini 15pin (VGA)
	Digital Scanning Frequency (H / V)	27 - 135 kHz / 24 - 60 Hz	27 - 135 kHz / 24 - 60 Hz	-	V: 50 - 64 Hz (DVI single link)	30 - 91 kHz / 48 - 85 Hz
	Analog Scanning Frequency (H / V)	-	-	-	-	30 - 91 kHz / 48 - 85 Hz
	Sync Formats	-	-	-	-	Separate, Composite, Sync on green
USB	Upstream	USB 2.0: Type-B (CDC)	USB 2.0: Type-B (CDC)	USB 2.0: Type-B	-	USB 2.0: Type-B
	Downstream	-	-	USB 2.0: Type-A x 2	-	USB 2.0: Type-A x 2
Power	Power Requirements	AC 100 - 240 V: 50 / 60 Hz	AC 100 - 240 V: 50 / 60 Hz	AC 100 - 240 V: 50 / 60 Hz	AC 100 - 240 V: 50 / 60 Hz	AC 100 - 240 V: 50 / 60 Hz
	Maximum Power Consumption	146 W	188 W	200 W	55 W	144 W
	Typical Power Consumption	-	-	130 W	-	85 W
	Power Save Mode	-	-	0 W (power switch off), < 20 W (external power off), < 35 W (external power on)	5.2 W (lamp off mode), 20.6 W (lamp dimmed mode)	19 W
Power Management	-	-	-	DVI DMPM	DVI DMPM	
Sensor	-	-	-	Backlight Sensor, Temperature Sensor	Backlight Sensor	
OSD Languages	English, German, French, Italian, Spanish, Swedish, Japanese, Simplified Chinese, Traditional Chinese	English, German, French, Italian, Spanish, Swedish, Japanese, Simplified Chinese, Traditional Chinese	English	English	English, German	
Features & Functions	Remote control (USB, RS-232C, GPI), PoP, S.R.S.C	Remote control (USB, RS-232C), PoP, S.R.S.C, Optical Bonding	PiP, PaP	Mirroring	User defined LUT function, Force Mode, PiP, PaP, PoP (source preview)	
Physical Specifications	Net Weight (Without Stand)	11.2 kg	12.8 kg	45 kg	10 kg	31 kg
	Hole Spacing (VESA Standard)	200 x 200 mm, M6, depth 7 - 11 mm / 100 x 100 mm, M4, depth 7 - 9 mm	200 x 200 mm, M6, depth 7 - 11 mm / 100 x 100 mm, M4, depth 7 - 9 mm	400 x 400 mm and 400 x 200 mm, M8.8, depth 16-20 mm	100 x 100 mm, M4, depth 5 - 7 mm	200 x 400 mm, M8, depth 10 - 30 mm
Environmental Requirements	Degree of Protection	IP45 (Front), IP32 (Rear)	IP45 (Front), IP32 (Rear)	Front: IP45 Rear: IP32	Front: IP65 Rear: IP42 (IP65 with TRM0000-M12)	Front: IP65 Rear: IP20
Certifications and Standards <small>(Please contact EIZO for the latest information.)</small>	CE (Medical Device), EN60601-1, ANSI/AAMI ES60601-1, CSA C22.2 No. 601-1, IEC60601-1, FCC-A, CAN ICES-3(A), RoHS, WEEE, EAC	CE (Medical Device), EN60601-1, ANSI/AAMI ES60601-1, CSA C22.2 No. 601-1, IEC60601-1, VCCI-A, FCC-A, CAN ICES-3(A), RCM, RoHS, China RoHS, WEEE, CCC, EAC, BIS	CE (Medical Device), IEC/EN60601-1, CAN/CSA C22.2 No. 601-1, ANSI/AAMI ES60601-1, EN60601-1-2 Class B, FCC-B, RCM, RoHS, China RoHS, WEEE	CE (Medical Device), IEC/EN60601-1, CAN/CSA C22.2 No. 601.1-M90, CAN/CSA C22.2 No. 60601-1-08, UL60601-1, FCC-B, RCM, RoHS, WEEE, CCC	CE (Medical Device), IEC/EN60601-1, EN60950-1, CAN/CSA C22.2 No. 60601-1-08, UL60601-1, FCC-B, RCM, RoHS, China RoHS, WEEE, CCC	
FDA	Class I	Class I	-	-	-	
Supplied Accessories	AC power cord, AC adapter, screws for VESA adapter x 8, cable cover, Utility Disk (PDF installation manual), instructions for use	AC power cord, AC adapter, screws for VESA adapter x 8, cable cover, Utility Disk (PDF installation manual), instructions for use	Power cable (eu, us, cn, jp), cable cover, screws for VESA adapter x 4 (preassembled), CD-ROM (Instructions for Use), general safety instructions	AC power supply to medical standards, power cables (en, us, jp), signal cable (DVI-D - DVI-D), forward spacer, positioning rail, mounting screws, Utility Disk (PDF Instructions for Use)	AC power Cord (eu, us, jp, cn), signal cable (DVI-D - DVI-D), remote control, Utility Disk (PDF Instructions for Use)	
Dimensions (Unit: mm)						
Connectors				Je nach Modellvariante: Optional:		

MONITORS



SCD 19102

19"



CuratOR EX190

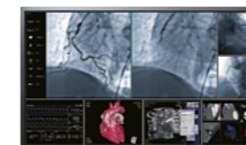
19"



CuratOR LX550W

55" WIDE

4K



RadiForce LS580W

58" WIDE

4K

Model Variations		SCD 19102 D: with stand SCD 19102 C: without stand SCD 19102 CP: without stand, with panel protector	EX190: without stand EX190-S: with stand	LX550W: without stand	LS580W: without stand
Cabinet Color		Black	Black	Black	Black
Panel	Type	Color (IPS)	Color (IPS)	Color (IPS Pro)	Color
	Backlight	LED	LED	LED	LED
	Size	48 cm / 19"	48 cm / 19"	138.8 cm / 55"	146 cm / 57.5"
	Native Resolution	1280 x 1024 (5:4 aspect ratio)	1280 x 1024 (5:4 aspect ratio)	3840 x 2160 (16:9 aspect ratio)	3840 x 2160 (16:9 aspect ratio)
	Viewable Image Size (H x V)	376.0 x 301.0 mm	376.0 x 301.0 mm	1209.6 x 680.4 mm	1270.0 x 721.0 mm
	Pixel Pitch	0.294 x 0.294 mm	0.294 x 0.294 mm	0.315 x 0.315 mm	0.331 x 0.334 mm
	Display Colors	8-bit colors: 16.77 million colors	8-bit colors: 16.77 million colors	10-bit colors: 1.07 billion colors	8-bit colors: 16.77 million colors
	Viewing Angles (H / V, typical)	170° / 170°	178° / 178°	178° / 178°	176° / 176°
	Brightness (typical)	330 cd/m ²	700 cd/m ²	700 cd/m ²	700 cd/m ²
	Recommended Brightness for Calibration	-	400 cd/m ²	400 cd/m ²	350 cd/m ²
	Contrast Ratio (typical)	900:1	900:1	1450:1	4000:1
Response Time (typical)	18 ms (On/Off)	14 ms (On/Off)	10 ms (black to white) 9 ms (white to black)	9.5 ms (Midtone)	
Video Signals	Input Terminals	BNC (Composite), DVI-I, D-Sub mini 15 pin (Separate Sync, Composite Sync, SoG), S-Video	DisplayPort, DVI-I (digital and analog RGBHV), BNC (SoG-signal)	DVI-D 24 pin (dual link) x 2, DisplayPort 1.1 x 2, HDMI (DVI-signal single link) x 2	DVI-D (dual link) x 2
	Output Terminals (Loop Through)	-	BNC (SoG-Signal)	-	-
	Digital Scanning Frequency (H / V)	31 - 100 kHz / 48 - 85 Hz	30 - 80 kHz / 60 - 75 Hz	131.3 kHz / 60 Hz	131.3 kHz / 59.7 - 60.3 Hz
	Analog Scanning Frequency (H / V)	24 - 100 kHz / 48 - 120 Hz	30 - 80 kHz / 50 - 85 Hz	-	-
	Sync Formats	Separate, Composite, Sync on green	Separate, Composite, Sync on green	-	-
USB	Upstream	-	USB 2.0: Type-B	USB 2.0: Type-B	-
	Downstream	-	USB 2.0: Type-A x 2	USB 2.0: Type-A x 2	-
Power	Power Requirements	AC 100 - 240 V: 50 / 60 Hz	AC 100 - 240 V: 50 / 60 Hz	AC 100 - 240 V: 50 / 60 Hz	AC 100 - 240 V: 50 / 60 Hz
	Maximum Power Consumption	58 W	58 W	400 W	400 W
	Power Save Mode	Less than 8 W	Less than 8 W	25 W	Less than 38 W
	Power Management	Digital: DVI DMPM, Analog: VESA DPM	Digital: DVI DMPM, Analog: VESA DPM	DMPM	DVI DMPM
Sensor		Backlight Sensor	Backlight Sensor	Backlight Sensor	Backlight Sensor
OSD Languages		English, German	English, German	English	-
Features & Functions		Force Mode	Color Slider, Force Mode	Cal-Switch, Ambient Light Adjustment, Picture-in-Picture (PiP), redundant components (power supply, backlight, data transmission), fail-safe function	Redundant components (power supply, backlight, data transmission)
Physical Specifications	Net Weight	SCD 19102 D: 9.7 kg	EX190-S: 8.1 kg	-	-
	Net Weight (Without Stand)	SCD 19102 C: 4.7 kg SCD 19102 CP: 5.3 kg	EX190: 5.1 kg	41 kg	47 kg
	Hole Spacing (VESA Standard)	100 x 100 mm, M4, depth 7 - 9 mm	100 x 100 mm, M4, depth 5 - 10 mm	400 x 400 mm, M8, depth 16 - 20 mm	400 x 400 mm, M8, depth 16 - 20 mm
Environmental Requirements		SCD 19102 D, SCD 19102 C: IP20 SCD 19102 CP: IP22 for front, IP20	IP20	IP20	IP20
Certifications and Standards <small>(Please contact EIZO for the latest information.)</small>		CE (Medical Device), IEC/EN60601-1, CAN/CSA C22.2 No. 601.1-M90, CAN/CSA C22.2 No. 60601-1-08, UL60601-1, FCC-A, RCM, RoHS, China RoHS, WEEE, CCC, BIS (EX190-S only)	CE (Medical Device), IEC/EN60601-1, CAN/CSA C22.2 No. 601.1-M90, CAN/CSA C22.2 No. 60601-1-08, UL60601-1, FCC-A, RCM, RoHS, China RoHS, WEEE, CCC, BIS (EX190-S only)	CE (Medical Device), IEC/EN60601-1, CAN/CSA C22.2 No. 601.1-M90, CAN/CSA C22.2 No. 60601-1-08, ANSI/AAMI E560601-1:2005, EN60601-1-2 Class B, UL60601-1, FCC-B, RCM, RoHS, China RoHS, WEEE, CCC, BIS	CE (Medical Device), IEC/EN60601-1, CAN/CSA C22.2 No. 601.1-M90, CAN/CSA C22.2 No. 60601-1-08, UL60601-1, FCC-B, RCM, RoHS, China RoHS, WEEE, CCC, BIS
Supplied Accessories		AC power cord, signal cables (DVI-D - DVI-D, BNC - D-Sub mini 15 pin), Utility Disk (PDF Instructions for Use)	AC power cord (eu, us, jp, cn), signal cables (DVI-D - DVI-D, DisplayPort), adapter (DVI - VGA), Utility Disk (PDF Instructions for Use)	AC power cord (eu, us), dual link signal cable (DVI-D - DVI-D) x 2, Utility Disk (PDF Instructions for Use)	AC power cord, dual link signal cable (DVI-D - DVI-D) x 2, Utility Disk (PDF Instructions for Use)
Dimensions (Unit: mm)					
Connectors					

VIDEO-MANAGEMENT



LMM56800
Large Monitor Manager

LMM0802
Large Monitor Manager

LMM0804
Large Monitor Manager

		without Gefen Matrix		with Gefen Matrix			
EX2620, EX2621		-	✓		✓		
EX2721, EX3220		-	✓		✓		
EX2620-3D, EX3220-3D		-	✓		✓		
EX3141-3D		-	-		-		
EX3140, EX3241		-	-		-		
EX5841		-	-		-		
EX271W, LX491W		-	✓		✓		
SCD 19102, EX190		-	✓		✓		
LX550W, LS580W		✓	✓		-		
Cabinet Color		Black		Black			
Video Signals	Input Terminals	Digital: HDMI connectors (DVI signals only) x 17, DVI-D x 3 Analog (high speed): 15-pol D-Sub x 3 Analog (standard): 15-pol D-Sub x 3 26 simultaneous visible inputs	Digital: HDMI connectors (DVI signals only) x 6, Digital / Analog: D-Sub mini 15 pin x 2, mini DIN x 2, 8 simultaneous visible inputs (in 16 windows maximum)	LMM0802: Digital / Analog: DVI-I x 2, Analog: D-Sub mini 15 pin x 2, mini DIN x 2, Gefen Matrix: Digital: DVI-D x 16, 12 (8+4) simultaneous visible inputs (in 16 +4 windows maximum)	Digital: HDMI connectors (DVI signals only) x 6, Digital / Analog: DVI-I x 2, Analog: D-Sub mini 15 pin x 2, mini DIN x 2, 8 simultaneous visible inputs	LMM0804: Digital / Analog: DVI-I x 2, Analog: D-Sub mini 15 pin x 2, mini DIN x 2, 8 simultaneous visible inputs Gefen Matrix: Digital: DVI-D x 16, 12 (8+4) simultaneous visible inputs	
	Input Performance	Digital: DVI (single link), 1920 x 1200, 60 Hz (165 MHz pixelclock), non-interlaced Analog (high speed): 1920 x 1200, 60 Hz (170 MHz pixelclock), non-interlaced Analog (standard): 1280 x 1024, 75 Hz (135 MHz pixelclock), non-interlaced	Digital: DVI-D (single link), 1920 x 1200 maximum, 60 Hz or 2048 x 1536, 30 Hz (165 MHz pixelclock maximum, horizontal size 2048 maximum), Analog: DVI-I, VGA, 1920 x 1200 maximum, 60 Hz (170 MHz pixelclock maximum, horizontal size 1920 maximum), S-Video (PAL/NTSC), SoG	Digital: DVI-D (single link), 1920 x 1200 maximum, 60 Hz, Analog: DVI-I, VGA, 1920 x 1200 maximum, 60 Hz (170 MHz pixelclock maximum, horizontal size 1920 maximum), S-Video (PAL/NTSC), SoG	Digital: DVI-D (single link), 1920 x 1200 maximum, 60 Hz or 2048 x 1536, 30 Hz (165 MHz pixelclock maximum, horizontal size 2048 maximum), Analog: DVI-I, VGA, 1920 x 1200 maximum, 60 Hz (170 MHz pixelclock maximum, horizontal size 1920 maximum), S-Video (PAL/NTSC), SoG	Digital: DVI-D (single link), 1920 x 1200 maximum, 60 Hz, Analog: DVI-I, VGA, 1920 x 1200 maximum, 60 Hz (170 MHz pixelclock maximum, horizontal size 1920 maximum), S-Video (PAL/NTSC), SoG	Digital: DVI-D (single link), 1920 x 1200 maximum, 60 Hz, Analog: DVI-I, VGA, 1920 x 1200 maximum, 60 Hz (170 MHz pixelclock maximum, horizontal size 1920 maximum), S-Video (PAL/NTSC), SoG
	Output Terminals	DVI-D (dual link) x 2 (via mini DisplayPort to DVI converter x 2)	DVI-D (dual link) x 2, HDMI connector (DVI single link signal only, scaler output)	LMM0802: DVI-D (dual link) x 2, HDMI connector (DVI single link signal only, scaler output) Gefen Matrix: DVI-D (single link) x 4	DVI-D (Dual Link) x 2 (connection of 2 monitors each: TID0102 or TDL Link Set needed), HDMI connector (DVI single link signal only) x 1	LMM0804: DVI-D (Dual Link) x 2 (connection of 2 monitors each: TID0102 or TDL Link Set needed), HDMI connector (DVI single link signal only) x 1 Gefen Matrix: DVI-D (single link) x 4	
	Output Performance	4MP x 2 (1920 x 2160 x 2, 60 Hz) Output format: 8MP (3840 x 2160, 60 Hz)	8MP (4096 x 2160: 2048 x 2160 x 2 channel) / 8MP (3840 x 2160: 1920 x 2160 x 2 channel) / 2 x 4MP (2560 x 1600) / 2 x 3.7MP (2560 x 1440) / 2 x FHD (1920 x 1080) / 2 x 2.3MP (1920 x 1200) / 2 x 2MP (1600 x 1200) HDMI connector: FHD (1920 x 1080)	LMM0802: 8MP (4096 x 2160: 2048 x 2160 x 2 channel) / 8MP (3840 x 2160: 1920 x 2160 x 2 channel) / 2 x 4MP (2560 x 1600) / 2 x 3.7MP (2560 x 1440) / 2 x FHD (1920 x 1080) / 2 x 2.3MP (1920 x 1200) / 2 x 2MP (1600 x 1200) LMM0802 (HDMI connector): FHD (1920 x 1080) Gefen Matrix: 10 x 2.3MP (1920 x 1200) / 10 x FHD (1920 x 1080) / 10 x 2MP (1600 x 1200)	4 x 2.3MP (1920 x 1200) / 4 x FHD (1920 x 1080) / 4 x 2MP (1600 x 1200) / 4 x 1MP (1280 x 1024) / 4 x (1368 x 768) (all connected monitors have to have the same resolution) HDMI connector: 1 x FHD (1920 x 1080)	LMM0804 (DVI connectors): 4 x 2.3MP (1920 x 1200) / 4 x FHD (1920 x 1080) / 4 x 2MP (1600 x 1200) / 4 x 1MP (1280 x 1024) / 4 x (1368 x 768) (all connected monitors have to have the same resolution) LMM0804 (HDMI connector): 1 x FHD (1920 x 1080) Gefen Matrix: 10 x 2.3MP (1920 x 1200) / 10 x FHD (1920 x 1080) / 10 x 2MP (1600 x 1200)	
Communication Connector		Ethernet (RJ45)		Ethernet (RJ45)			
USB	Upstream	-	USB 2.0: type-A x 8 (for control of video applications on PC)	USB 2.0: type-A x 8 (for control of video applications on PC)	USB 2.0: type-A x 8 (for control of video applications on PC)		
	Downstream	-	USB 2.0: type-B x 6 (e.g. for keyboard, mouse, joystick)	USB 2.0: type-B x 5 (e.g. for keyboard, mouse, joystick)	USB 2.0: type-B x 5 (e.g. for keyboard, mouse, joystick)		
Power	Power Requirements	AC 100 - 240 V; 5 - 2.5 A; 50 - 60 Hz Redundancy: 2 independent power supplies, hot swap capable	AC 100 - 120 V, 200 - 240 V: 50 / 60 Hz		AC 100 - 120 V, 200 - 240 V: 50 / 60 Hz		
	Power Consumption	340 W (typ.)	100 W (max.)	190 W (max.)	190 W (max.)		
OSD Languages		-	English, German, French, Japanese		English, German, French, Japanese		
Physical Specifications	Net Weight	18 kg (incl. converting modules and Y-cables)	5.3 kg	13.1 kg	5.5 kg		
	Mechanical Adaption	19" rack design, 4 U high	19" rack design, 2 U high	19" rack design, 4 U high	19" rack design, 2 U high		
Environmental Requirements		Degree of Protection IP20		IP20			
Controls and Status		Software control interface for layout, status and diagnosis, LED indicators for power supplies		Graphical user interface and software control interface for operating, status and diagnosis, LED indicators for hardware status x 2			
Certifications and Standards (Please contact EIZO for the latest information.)		CE, EN60950-1, CAN/CSA C22.2 No.60950, UL60950, EN55022-Class-B, RCM, RoHS, China RoHS, WEEE		CE, IEC/EN60601-1, CAN/CSA C22.2 No. 601.1-M90, CAN/CSA C22.2 No. 60601-1-08, UL60601-1, EN55022-Class-B, RCM, RoHS, China RoHS, WEEE, CCC			
Supplied Accessories		AC power cord (us, en), converter modules (DisplayPort - DVI) x 2, holder for converter modules, Y-cables x 3, Utility Disk (PDF Instructions for Use)		AC power cord (us, eu, cn, jp), adapter cables (HDMI - DVI) x 6, mounting brackets, screws x 4, Utility Disk (PDF Instructions for Use, test patterns) Gefen Matrix: cables (DVI) x 16, adapter cable (RS232 - USB), Manual, Installation Guide			
Dimensions (Unit: mm)							

CAMERA SYSTEM



SC430-PTR
4K/60p Surgical Field Camera

Camera Head	Image Sensor	1/2.5 type CMOS, single chip type
	Effective Pixels	3840 x 2160
	Zoom	Optical 30x motorized zoom
	Focal Length (f=)	4.6 (W) - 135 (T) mm
	Horizontal Field of View (HFOV)	68 (W) - 2.6 (T) deg.
	Minimum Object Distance (MOD)	1500 mm (throughout the zoom range) 1000 mm (with Close-up lens)
	Filter Diameter	72 mm
	Focus Control	Auto, Manual
	Iris Control	Auto, Manual
	Pan Range	+/-170 deg.
Tilt Range	+90 / -30 deg.	
Roll Range	+/-165 deg.	
Pan Speed	8.6 - 0.05 deg/s, 7 steps	
Tilt Speed	8.6 - 0.05 deg/s, 7 steps	
Roll Speed	30 - 0.2 deg/s, 7 steps	
Built-in microphone	Yes	
Features & Functions	Image Control	Auto Level Control (ALC), Center Weighting Metering, BT.2020 Emulation, White Balance, Sharpness
	Gain	Auto, Manual (0 - 45 db)
	Shutter Speed	[59.94 Hz output] 1/60 - 1/10000 [50 Hz output] 1/50 - 1/10000
Video Format	Picture Flip	Normal, Flip
	4K UHD	HDMI: 2160/59.94p, 2160/50p SDI: 2160/59.94p, 2160/50p
	FHD	HDMI: 1080/59.94p, 1080/59.94i, 1080/50p, 1080/50i SDI: 1080/59.94p, 1080/59.94i, 1080/50p, 1080/50i
General	Output Terminals	HDMI x 2, BNC (Quad Link 3G-SDI), BNC (3G-SDI), Audio
	Remote Control	LAN, RS-232C, IR remote
	Power Requirements	DC 24 V (bundled AC adapter)
	Maximum Power Consumption	55 W
	Net Weight	Camera Head and Mount: 3.1 kg (with cable cover) Camera Control Unit: 2.9 kg
	Hole Spacing	Camera Mount: 100 x 100 mm
	Operating Temperature	Camera Head and Mount: 0 - 40°C Camera Control Unit: 0 - 40°C
	Operating Humidity	20 - 80%RH
	Certifications & Standards	IEC60601-1, CE, CB, FCC-A, CAN ICES-3 (A), RoHS, WEEE
	Supplied Accessories	AC adapter, AC power cord (2 m), Camera cable (25 m), IR remote, Rubber feet x 4, ND filter, Close-up lens, Cable cover, Thread-locking fluid, Instructions for Use, Quick Reference
Dimensions (Unit: mm)		

VIDEO-MANAGEMENT OVER IP



TIPO210-DVI
IP-Transceiver



TIPO410-HDMI
IP-Transceiver



TIPO810-HDMI
IP-Transceiver

Cabinet Color	Silver	Silver	Silver	
Network	Bandwidth	10 Gb/s	10 Gbit/s	
	Cable	LWL duplex LC/LC (SFP+ module necessary)	LWL duplex LC/LC (SFP+ module necessary)	
Video	Input Resolution	Up to FHD (1920 x 1200), 1 x uncompressed, 60 Hz and 30 Hz, progressive and interlaced	Up to FHD (1920 x 1200), 1 x uncompressed, 60 Hz and 30 Hz, progressive and interlaced	
	Output Resolution	Up to FHD (1920 x 1200), 2 x uncompressed, 60 Hz and 30 Hz, progressive	Up to FHD (1920 x 1200), 2 x uncompressed, 60 Hz and 30 Hz, progressive	
	Interface	DVI-D (in/out), DVI-D (out/ loop through) Modes: Single In / Single Out (up to FHD) In/Out (up to FHD) Dual Out (up to FHD) Loop Through (up to FHD)	HDMI 1.4 (in), HDMI 1.4 x 2 (out/ loop through) Modes: Single In / Single Out (up to 4K/30Hz) In/Out (up to 4K/30Hz) Dual Out (up to FHD) Loop Through (up to 4K/30Hz)	HDMI 2.0 (in), HDMI 2.0 (out) Modes: Single In / Single Out (up to 4K/60Hz)
	Multiview	Side-by-Side, Picture-in-Picture, QuadView, Matrix View 3+1 and 1+3 right	Side-by-Side, Picture-in-Picture, QuadView, Matrix View 3+1 und 1+3 right	Side-by-Side, Picture-in-Picture, QuadView
Control	Mouse and keyboard control	Mouse and keyboard control	Mouse and keyboard control	
Audio	Audio (in/out)	Audio (in/out)	Audio (in/out)	
Connectors	SFP+ (10 GbE, optional SFP+ module), DVI-D x 2, USB/A x 2, USB/B, audio jack x 2	SFP+ (10 GbE, optional SFP+ module), HDMI x 3, USB/A x 2, USB/B, audio jack x 2	SFP+ (10 GbE, optional SFP+ module), HDMI x 2, USB/A x 2, USB/B, audio jack x 2	
Power Consumption	17 W, optional: 5 W (for USB), passive cooling	17 W, optional: 5 W (for USB), passive cooling	17 W, optional: 5 W (for USB), passive cooling	
Power Requirements	External power supply, 230 AC	External power supply, 230 AC	External power supply, 230 AC	
Net Weight	1050 g	1050 g	1050 g	
Certifications and Standards (Please contact EIZO for the latest information.)	CE, IEC60950, tested for IEC60601-1-2, RoHS, Reach, WEEE	CE, IEC60950, tested for IEC60601-1-2, RoHS, Reach, WEEE	CE, IEC60950, tested for IEC60601-1-2, RoHS, Reach, WEEE	
Optional Accessories	Optical module (SFP+ 10G LC), power supply, connection and mounting accessories	Optical module (SFP+ 10G LC), power supply, connection and mounting accessories	Optical module (SFP+ 10G LC), power supply, connection and mounting accessories	
Dimensions (Unit: mm)				

SIGNAL ROUTING



PDC0100
Analog-DVI Converter



PDS0800-HD
DVI Splitter / Scaler



TID0102
DVI Splitter

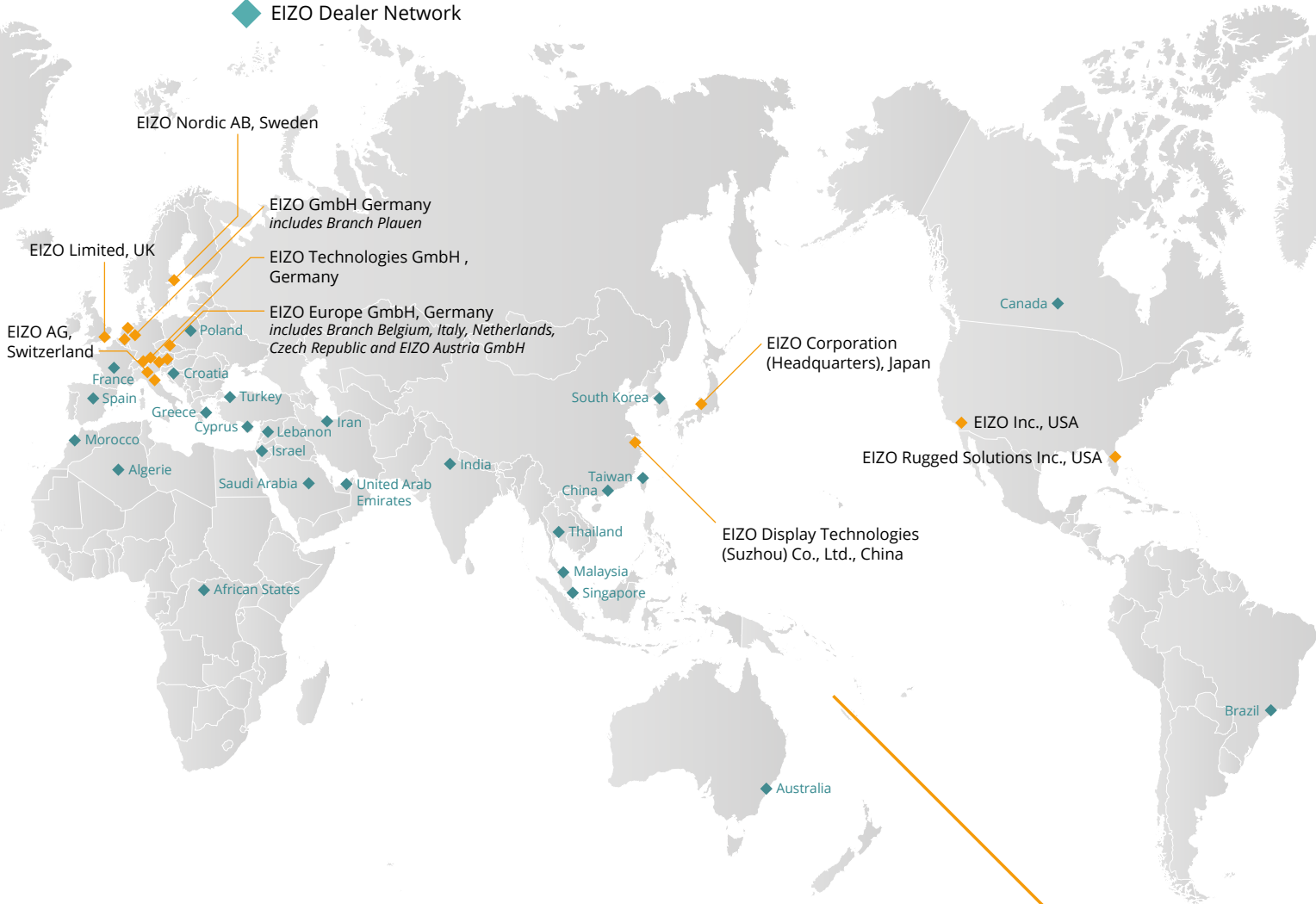


TDL3600 / TDL2300
DVI Transmission Link

Model Variations	-	-	TID0102-DVI: DVI-Splitter TID0102-HDL: With additional HDL outputs	TDL3600-QL: quad link, 36m TDL3600-DL: dual link, 36m TDL3600-SL: single link, 36m TDL2300-SL: single link, 23m
Cabinet Color	Black	Light Gray	Black	Silver
Input Terminals	DVI-I (digital: DVI, analog: RGB), D-Sub mini 15 pin (Separate, Composite, SoG), BNC (Composite, PAL, NTSC), 4 pin mini DIN (S-Video)	DVI-D (dual link) x 2	DVI	TDL3600-QL: DVI-D (dual link) x 2 TDL3600-DL: DVI-D (dual link) TDL3600-SL / TDL2300-SL: DVI-D
Input Performance	Digital: DVI-D (single link), max. 1600 x 1200, 60 Hz, Analog: VGA, SVGA, XGA, SXGA, UXGA, PAL, NTSC, Scanning Frequency: Analog 30 - 100 kHz, 50 - 100 Hz	8MP (4096 x 2160: 2048 x 2160 x 2 channel, 60 Hz), 8MP (UHD, 3840 x 2160: 1920 x 2160 x 2 channel, 60 Hz)	Up to 1920 x 1200 (x 2 thru Dual Link)	Transmitter module at PC side (DVI-D - RJ45), Ethernet cable (RJ45 - RJ45), Receiver module at monitor side (RJ45 - DVI-D)
Output Terminals	DVI-D	DVI-D (dual link) x 4, DVI-D (single link), mini DIN (YPbPr)	TID0102-DVI: DVI x 2 TID0102-HDL: DVI x 2, RJ45 (HDL) x 2	TDL3600-QL: DVI-D (dual link) x 2 TDL3600-DL: DVI-D (dual link) TDL3600-SL / TDL2300-SL: DVI-D
Output Performance	1280 x 1024 (SXGA), 60 Hz	8MP (4096 x 2160: 2048 x 2160 x 2 channel, 60 Hz) 8MP (3840 x 2160: 1920 x 2160 x 2 channel, 60 Hz) Downscale-output (UHD input only): FHD (1920 x 1080, 60 Hz) Analog / Composite (1920 x 1080, 60 Hz)	DVI: Depending on input signal HDL: up to Full HD (1920 x 1080, 60 Hz)	TDL3600-QL: 3840 x 2160 TDL3600-DL: 2560 x 1600 TDL3600-SL / TDL2300-SL: 1920 x 1200
Connector	RJ11 x 2 (Upstream, Downstream), Supported Signal: RS 232-Bus	-	-	-
Configuration	-	-	Dip switch 8pin x 2	-
Power Requirements	AC 100 - 120 V, 200 - 240 V: 50 / 60 Hz	AC 100 - 120 V, 200 - 240 V: 50 / 60 Hz	TID0102-DVI: 5 V thru LMM0804 TID0102-HDL: 12 V thru external power adapter	PC side: through DVI interface Monitor side: 5 V support from monitor Optional: 5 V external power supply
Power Consumption	10 W	20 W	TID0102-DVI: 3.6 W TID0102-HDL: 8.4 W	-
Degree of Protection	IP20	IP20	IP20	-
Net Weight	850 g	1.1 kg	0.9 kg	-
Mechanical Adaption	Injection nut M3 on each side (distance 31.8 mm) x 2	19" rack design, 1 U high	19" Rackform (half), 1 U high	-
Certifications and Standards (Please contact EIZO for the latest information.)	CE, EN60950, UL60950, CAN/CSA C22.2 No. 60950-1, EN60601-1-2-B, FCC-A, RoHS, RCM, China RoHS, WEEE	CE, EN60950, EN55022 Class B, EN55024, FCC-A, RoHS, China RoHS, RCM, WEEE	CE, IEC60950-1, CSA - C22.2 No. 60950-1, FCC-B, RoHS, RCM, WEEE	CE, IEC/EN60601-1, CAN/CSA C22.2 No. 601.1-M90, CAN/CSA C22.2 No. 60601-1-08, UL60601-1, EN60601-1-2 Class B, FCC-A, RCM, RoHS, China RoHS, WEEE
Supplied Accessories	AC adapter, signal cable (VGA - VGA, DVI - DVI), remote key pad with 30 m cable, Utility Disk (PDF Instructions for Use)	Adapter mini DIN to 3 x cinch, AC adapter	AC adapter (TID0102-HDL only), signal cable (DVI dual link, 0.5 m), mounting brackets x 2 holder x 2, Utility Disk (PDF Instructions for Use)	TDL3600-QL: Transmitter x 2, Receiver x 2, mounting set for LX550W/LS580W, 36 m cable x 4, LMM56800/LMM0802, 36 m cable x 4, AC adapter, TDL3600-DL: Transmitter, Receiver, 36 m cable, AC adapter, TDL3600-SL: Transmitter, Receiver, 36 m cable, AC adapter, TDL2300-SL: Transmitter, Receiver, 23 m cable, AC adapter, Utility Disk (PDF Instructions for Use)
Dimensions (Unit: mm)				

◆ EIZO Location

◆ EIZO Dealer Network



Contacts

You will find your EIZO contact partners at:
www.eizo-or.com/contact

Contact for OEM customers

EIZO GmbH
Carl-Benz-Str. 3
76761 Rülzheim
Germany

Tel: +49 7272 9850-0
Fax: +49 7272 9850-471
E-Mail: dt-contact@eizo.com
Web: www.eizo-or.com